



CATALOG 2016

North America

STONE WOOL ACOUSTIC CEILINGS

TABLE OF CONTENT:

INSPIRATION:	12
■ Textures	14
■ Special surfaces	16
■ Colors	18
■ Edges	20
– Concealed grid ceilings	20
– Tegular grid ceilings	22
– Lay-in grid ceilings	22
■ Non-suspended ceiling solutions: Baffles and Islands	22
■ Dimensions and layout	24
APPLICATIONS:	26
PERFORMANCES:	28
■ Acoustics	30
– The importance of acoustics	31
– Acoustics is the science of sound	32
– How to improve acoustics	34
– How to compare ceiling acoustics	36
– The influence of sound absorption on room-to-room sound insulation	38
– ROCKFON® Sonar dB™ maximizes sound insulation	39
■ Sustainability	40
■ Fire performance	42
■ Indoor environment	44
■ Cleaning	46
■ Hygiene	46
■ Humidity resistance	48
■ Impact resistance	49





PRODUCTS:50

DESIGN WHITE:

- ROCKFON Sonar®52
- ROCKFON® Sonar Activity™54
- ROCKFON® Sonar™ dB56
- ROCKFON Alaska®58
- ROCKFON® Alaska™ dB.....60

DESIGN DECORATION:

- ROCKFON® Color-all™62
- ROCKFON® Cinema Black™64

BASIC WHITE:

- ROCKFON® Pacific™68
- ROCKFON Artic®70
- ROCKFON Koral®72
- ROCKFON® Tropic™74

SPECIAL AREA: HEALTHCARE

- ROCKFON® Medical Standard™76
- ROCKFON® Medical Plus™78
- ROCKFON® Medical Air™80

SPECIAL AREA: HYGIENE

- ROCKFON® Hygienic Plus™82

SPECIAL AREA: IMPACT RESISTANCE

- ROCKFON® Impact™84

SPECIAL AREA: INDUSTRIAL

- ROCKFON® Facett™86
- ROCKFON® Industrial Opal/Nature/Black™88

NON-SUSPENDED CEILINGS: BAFFLES

- ROCKFON® Contour™90
- ROCKFON® Multiflex™ Baffles.....92

NON-SUSPENDED CEILINGS: ISLANDS

- ROCKFON® Island™94

ROCKFON® sustainable stone wool ceiling solutions come to North America

ROCKFON® is a leading provider of acoustic stone wool and metallic ceiling solutions and suspension systems.

With the acquisition of Chicago Metallic®, ROCKFON provides customers a complete ceiling system offering combining ROCKFON stone wool and specialty metal ceiling panels with Chicago Metallic suspension systems.

ROCKFON complete ceiling systems are a fast and simple way to create beautiful, comfortable spaces. Easy to install and durable, they protect people from noise and the spread of fire while making a constructive contribution towards a sustainable future.

ROCKFON is a subsidiary of Denmark-based ROCKWOOL International A/S, the world's largest producer of stone wool products.

For the past 20 years, the ROCKWOOL Group has been present in North America through ROXUL® Inc., the leading North America manufacturer of stone wool insulation products for the North American market.

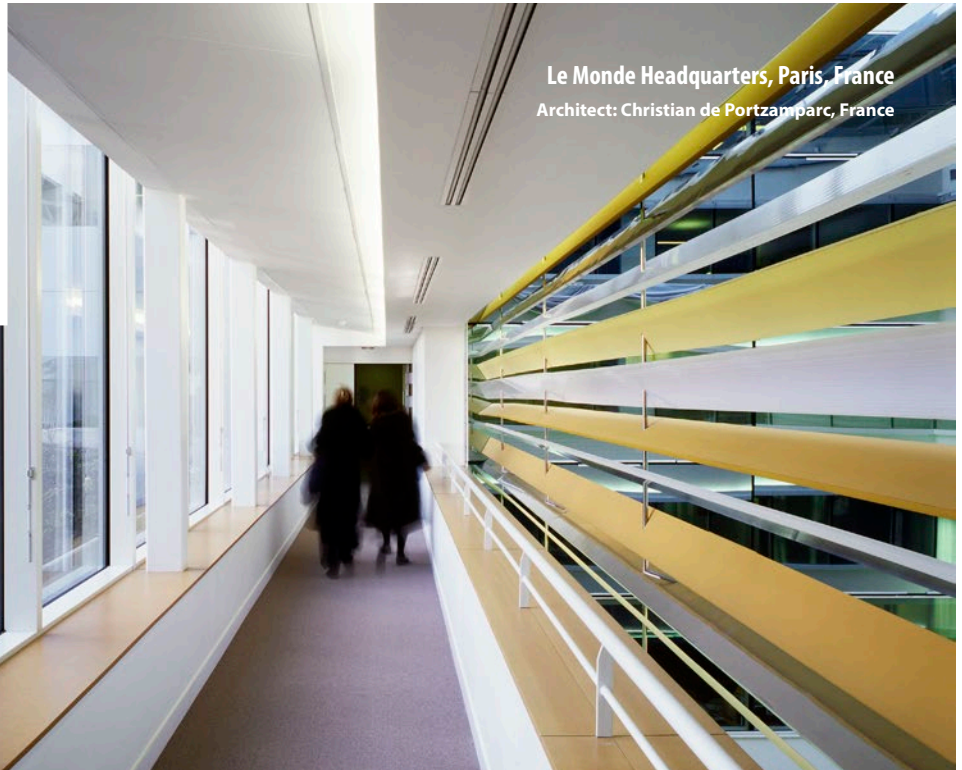
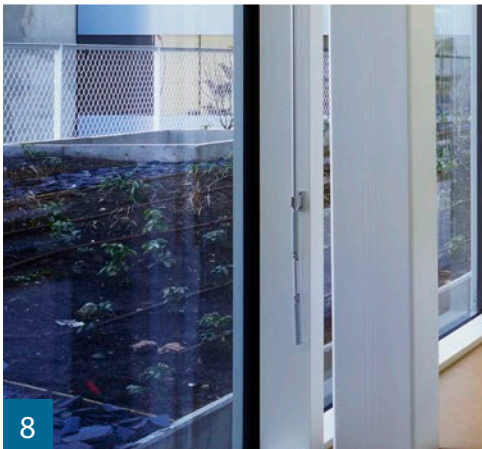
ROCKFON acoustic ceiling tiles have performance advantages made possible by a raw material found only in ROCKFON products: stone wool. Stone wool is produced from volcanic rock, or basalt, which features unique properties that give stone wool a number of superior performance characteristics and attributes.

ROXUL
Rockfon®





Gateway Academy, Thurrock, United Kingdom
Architect: Lyster, Grillet and Hardling, United Kingdom

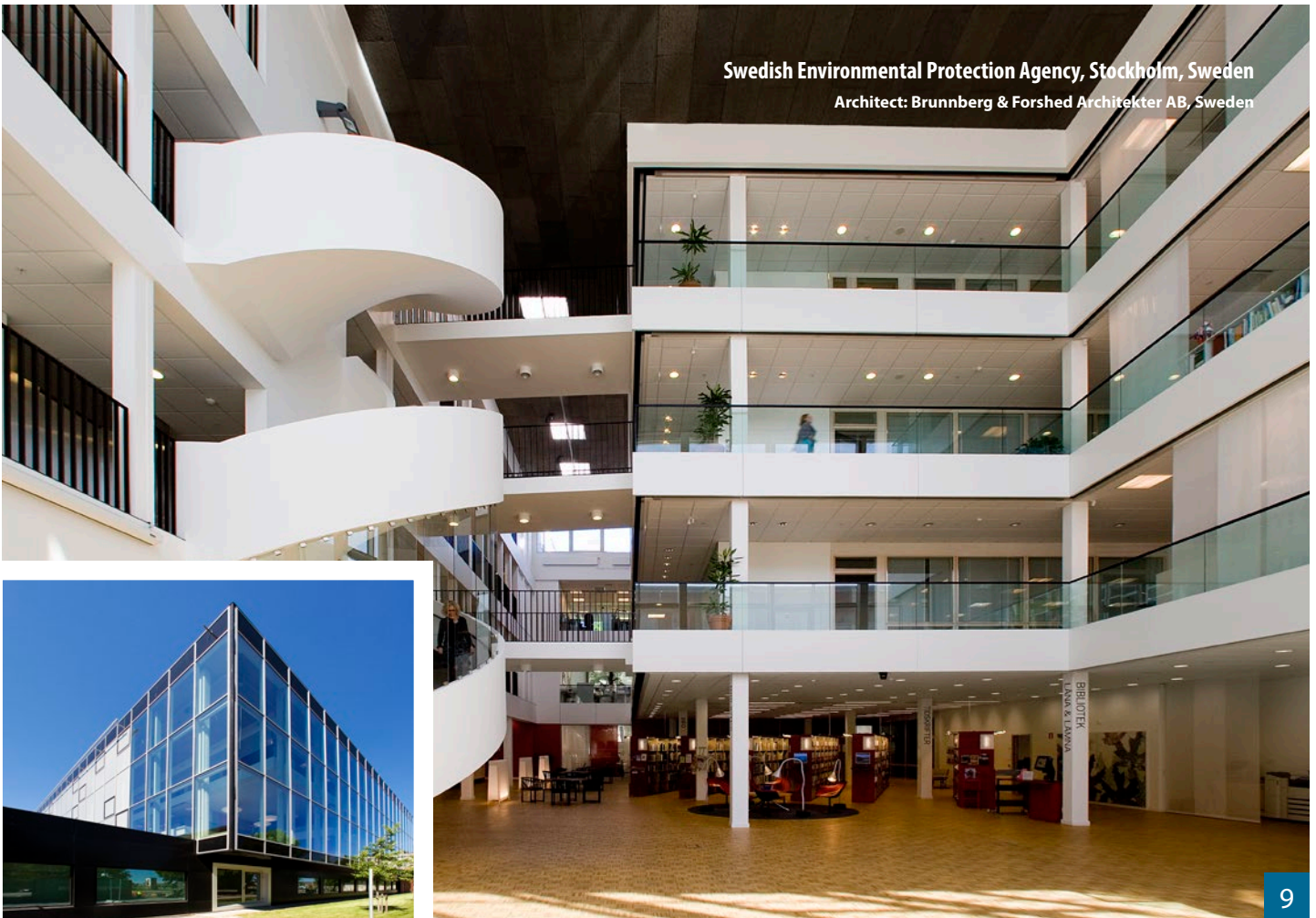


Le Monde Headquarters, Paris, France
Architect: Christian de Portzamparc, France

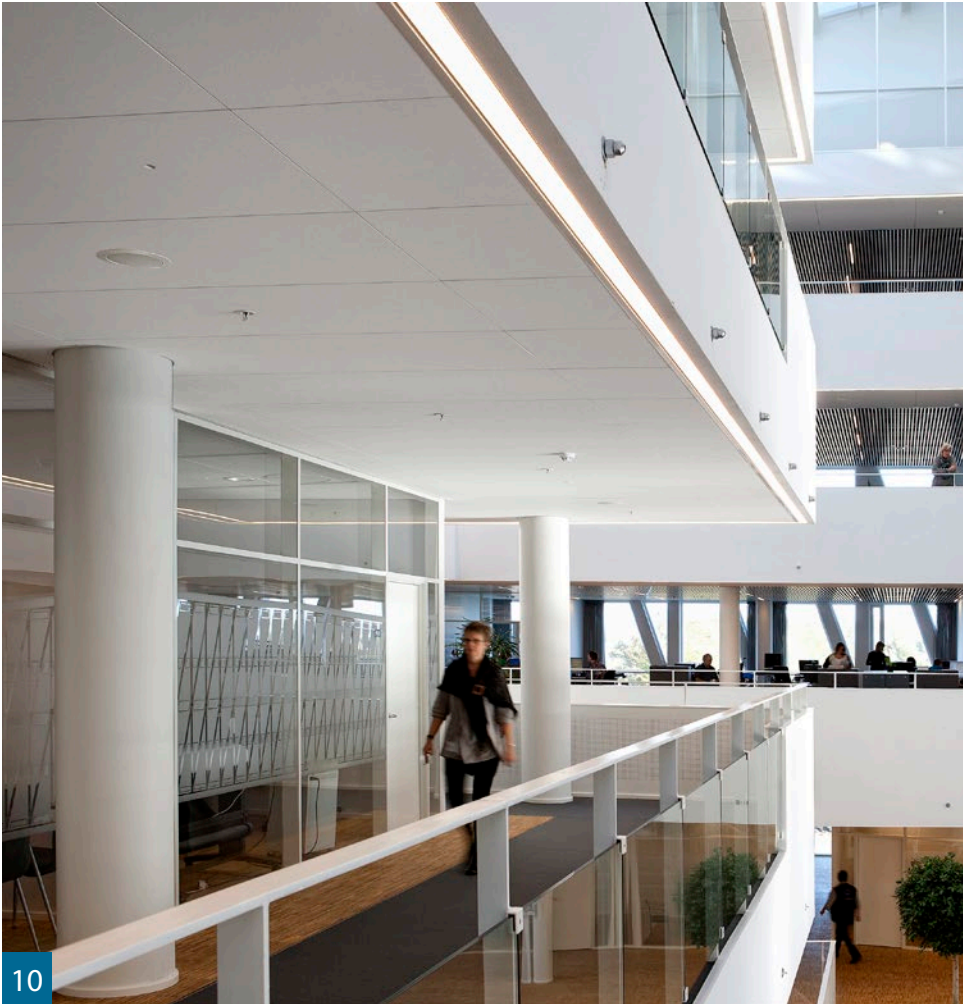
Marina Bay Financial Centre, Singapore
Architect: Kohn Pedersen Fox Architects, United States



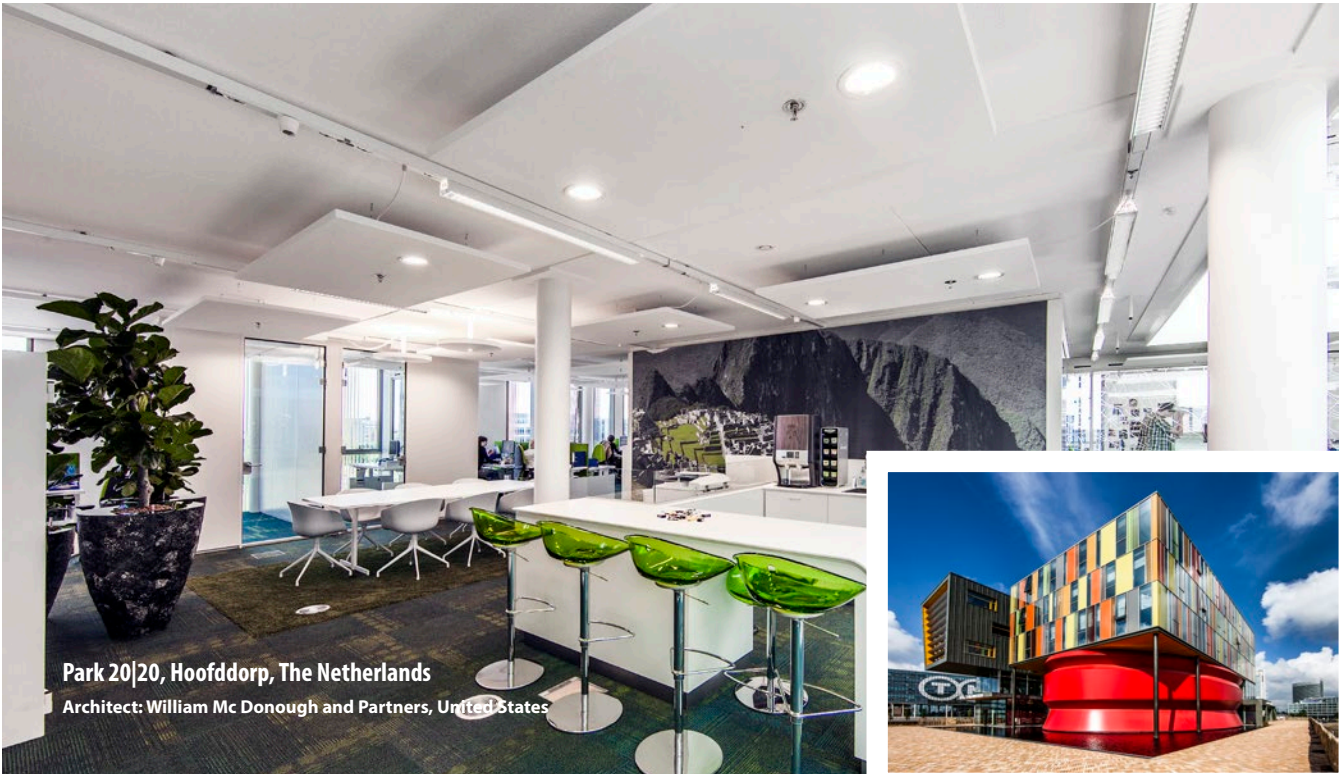
Swedish Environmental Protection Agency, Stockholm, Sweden
Architect: Brunnberg & Forshed Arkitekter AB, Sweden



UMCG Education Building, Groningen, The Netherlands
Architect: RAU architecten, The Netherlands



Viborg City Hall, Viborg, Denmark
Architect: Henning Larsen, Denmark

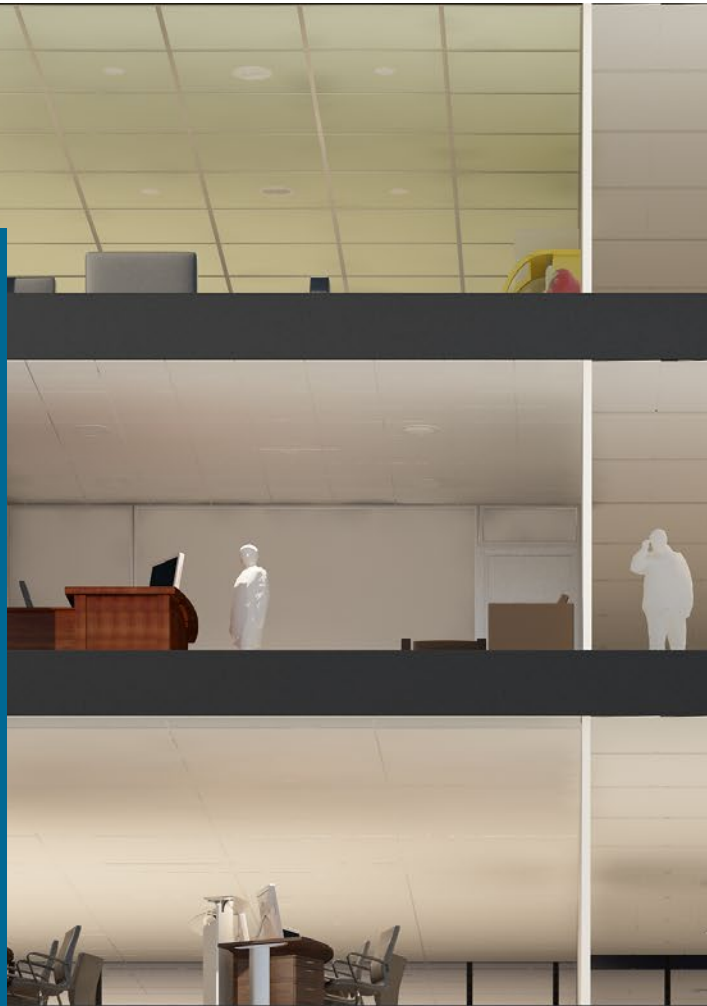


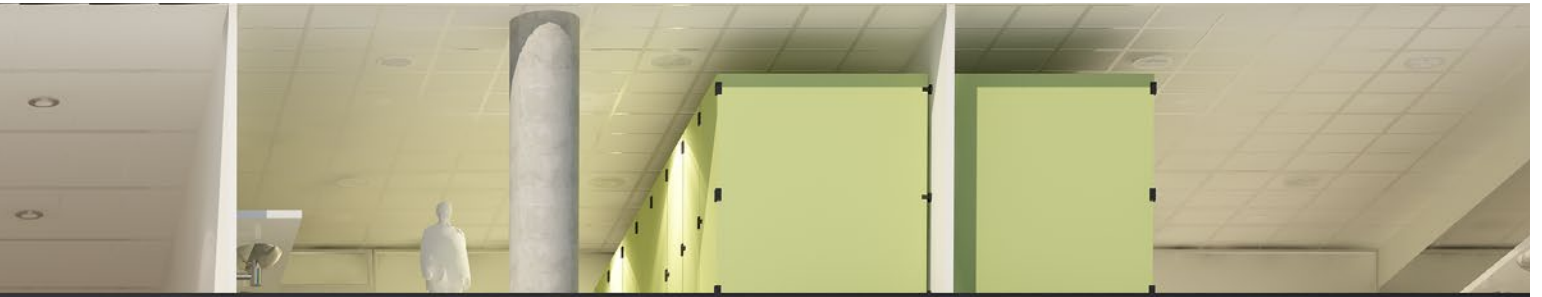


INSPIRATION:

At ROCKFON, we make ceilings that provide excellent acoustics and high-quality indoor environments. This frees you to concentrate on developing designs that meet the needs of your building.

- Textures 14
- Special surfaces..... 16
- Colors 18
- Edges 20
 - Concealed grid ceilings 20
 - Tegular grid ceilings 22
 - Lay-in grid ceilings 22
- Non-suspended ceiling solutions: Baffles and Islands 22
- Dimensions and layout:..... 24







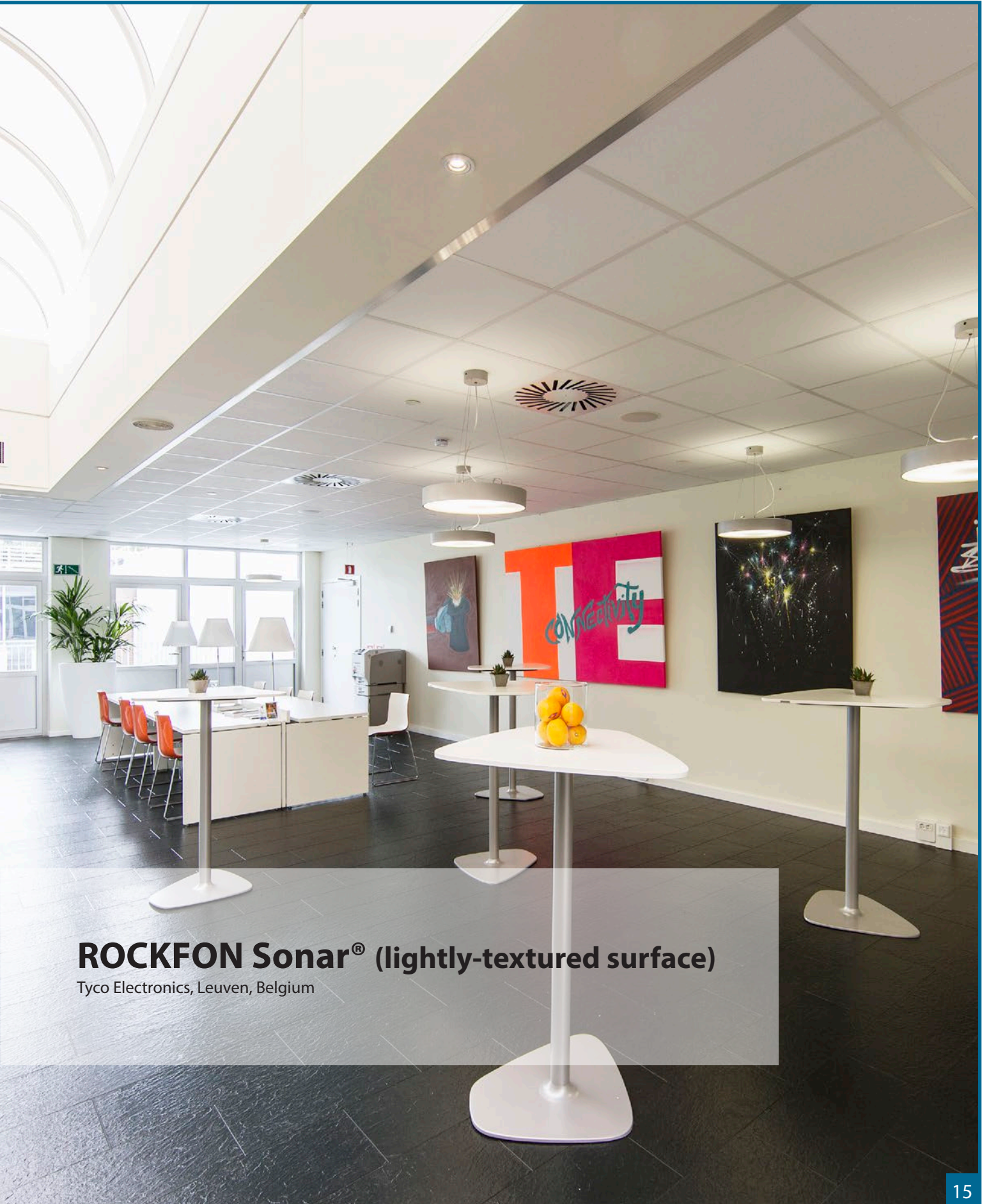
Textures:

ROCKFON ceiling products come with either a smooth matt or lightly-textured surface. Both are suitable for most common applications.



ROCKFON Alaska[®] (smooth matt surface)

Mikado House, Copenhagen, Denmark



ROCKFON Sonar® (lightly-textured surface)

Tyco Electronics, Leuven, Belgium



Special surfaces:

We also provide surfaces for tough environments, such as schools where impact resistance is important, or for healthcare, where cleanability and hygiene are key factors.

ROCKFON® Impact™

Beekdal Lyceum, Arnhem, The Netherlands



Cardiologie

79



ROCKFON® Medical Plus™

Deventer hospital, Deventer, The Netherlands

Colors:

Color is an important design element that conveys a mood, function or atmosphere in a room. We provide a complete range of colored ceiling solutions called ROCKFON® Color-All™.



ROCKFON® Color-All™



The background of the page is a detailed architectural floor plan of an office building. It shows multiple rooms, corridors, and service areas. A large, semi-transparent grey rectangular box is overlaid on the left side of the plan, containing text. The plan includes various furniture like desks, chairs, and tables, as well as structural elements like walls, doors, and stairs. The overall style is technical and precise.

Edges:

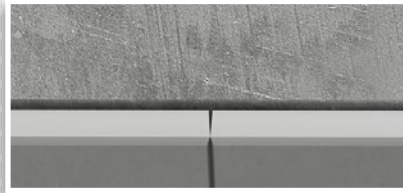
ROCKFON offers a wide range of edge options that enable you to create the exact ceiling appearance you want.

Concealed grid ceilings

A concealed grid ceiling system can be suspended, directly fastened, or glued to the ceiling. With little or no visible grid, they provide a concealed appearance and can integrate service installations such as lighting, ventilation and smoke detectors. The following edge types can be used to create a concealed grid ceiling.

DMT (Direct Mount)

Direct mount option is used to bond tiles directly to the structural soffit or to an existing ceiling surface with the use of a recommended adhesive.

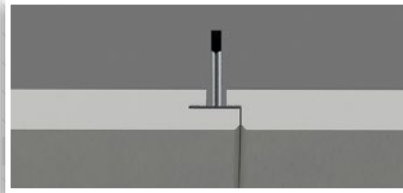


Direct Mount



SLP (Shiplap)

Use SLP when you want an invisible grid but need to retain access to the ceiling void. For easy installation and removal, SLP tiles have CDC edges on the two opposite sides and SLP edges on the adjacent sides. They are fully demountable.

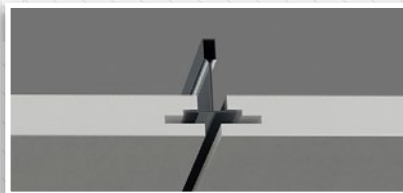


Shiplap



SCD (Semi-Concealed)

With SCD edge, the ceiling appears to float under the grid profiles, thanks to the profiled edge and deeply recessed grid profiles. The SCD edge gives the ceiling an elegant and characteristic shade look with a 1/4" reveal. Tiles with a SCD edge are demountable.

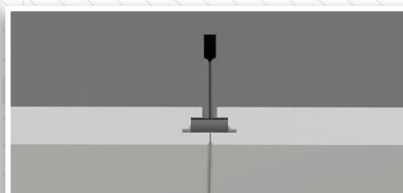


Semi-Concealed



CDX (Concealed-X)

CDX ceiling tiles can be installed in framed islands or as a full wall-to-wall ceiling. CDX tiles create an impressive concealed grid ceiling with an optimal monolithic appearance (the grid is hidden completely). All CDX tiles are demountable, in any order.



Concealed - X



Tegular grid ceilings

Tegular grid ceilings use light and shadow to create a distinctive appearance. Combine the shape of the ceiling tile edges with the width and color of the suspension system to create a unique ceiling that contributes to the overall architectural expression of the space. Tegular ceiling tiles have an SL edge and are available in four versions.

SL, SLT, SLN, SLTN (tegular)

Tegular edge tiles hang on a visible and recessed grid system, which creates a shadow between the tiles. Tiles with a tegular edge are square (SL, SLN) or angled (SLT, SLTN) and can be mounted in a grid system with either 9/16" (SLN, SLTN) or 15/16" (SL, SLT) profiles. The grid system is less dominant with the narrower 9/16" profile. Ceiling tiles with tegular edge are demountable.



Square Tegular Narrow



Square Tegular



Angled Tegular Narrow



Angled Tegular

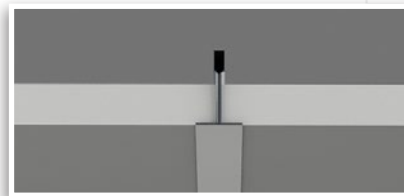


Lay-in grid ceilings

A lay-in grid system provides the room with a simple and structured expression that highlights the shape of the room. Lay-in grid ceilings have a SQ edge.

SQ (square lay-in)

SQ tiles are a cost effective solution that provides easy access to the installations hidden behind the ceiling. They typically can be mounted in grid systems with either 9/16" or 15/16" profiles. The grid system is less dominant with the narrower 9/16" profile. SQ edge tiles are demountable.



Square Lay In



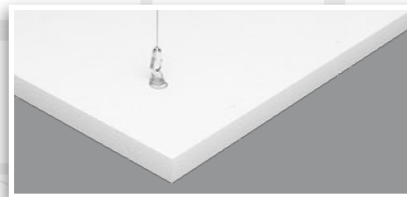
Non-suspended ceiling solutions

– Baffles and Islands

ROCKFON Baffles and Islands provide an alternative acoustic solution for rooms where suspended ceilings are not suitable. They can be used as part of a retrofit or to create a design feature. They are suited to thermal mass applications where the soffit needs to be left exposed.

ROCKFON Island

ROCKFON Island is available in square or rectangular formats and is suitable for any room configuration. The frameless shape has a sharp, minimalistic edge and a subtle and elegant bevel.



DMT



ROCKFON Contour Baffle

ROCKFON Contour Baffle is a frameless baffle with a minimalistic edge and an elegant bevel.



SQc



ROCKFON Multiflex baffles (framed baffles)

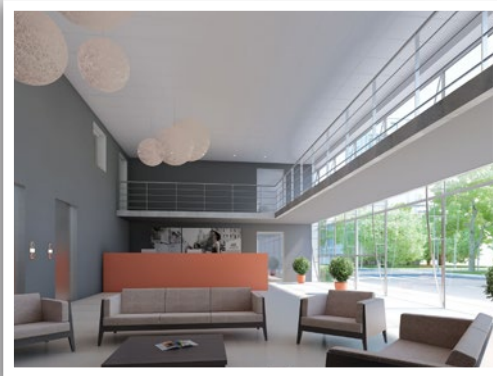
ROCKFON Multiflex baffles are hung vertically. They come mounted in a lacquered or galvanized steel frame that features right-angle eye hooks for easy installation.



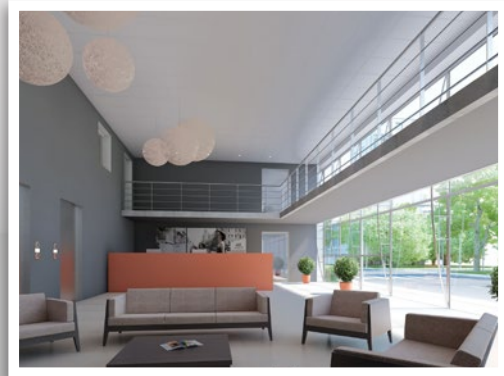
Dimensions and layout:

Most ROCKFON products are available in a wide range of dimensions, which lets you combine different modular sizes. Please refer to a product's data sheet for all available dimensions.

Surface and color options

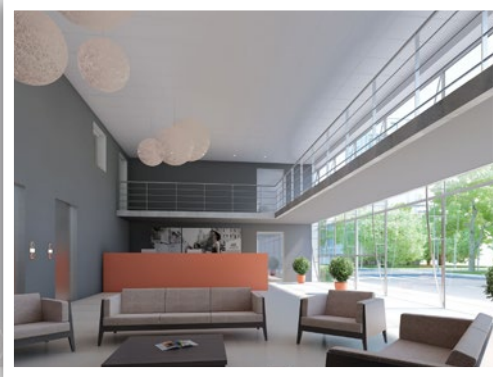


ROCKFON Sonar®, SQ, 2' x 2'

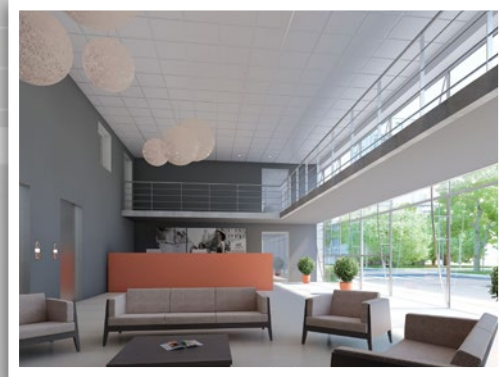


ROCKFON Alaska®, SQ, 2' x 2'

Edge and dimension options

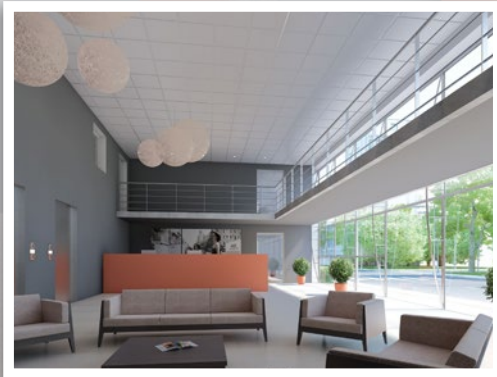


ROCKFON Sonar®, SQ, 2' x 2'

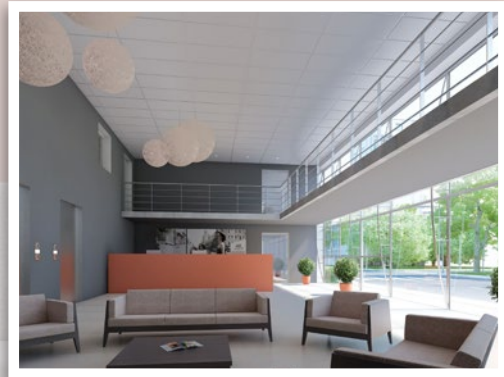


ROCKFON Sonar®, SLT, 2' x 2'

Layout options



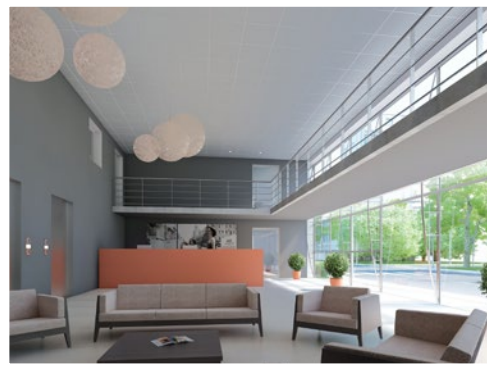
ROCKFON Alaska®, SLT, 2' x 2'



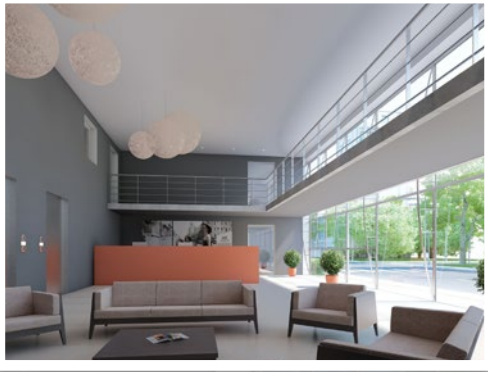
ROCKFON Alaska®, SLT, 2' x 4'



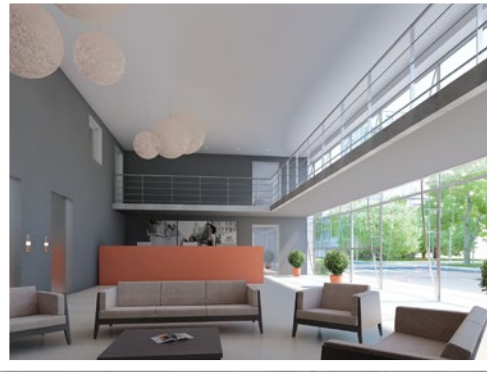
ROCKFON® Color-All™ Charcoal 2' x 2'



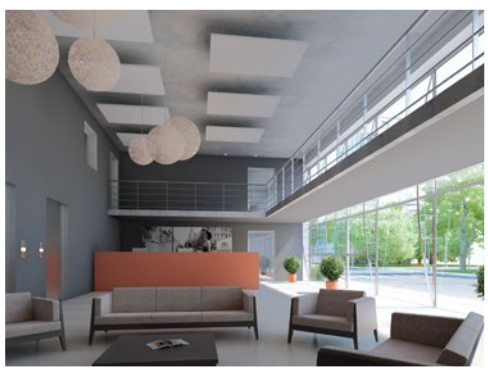
ROCKFON® Color-All™ Mercury 2' x 2'



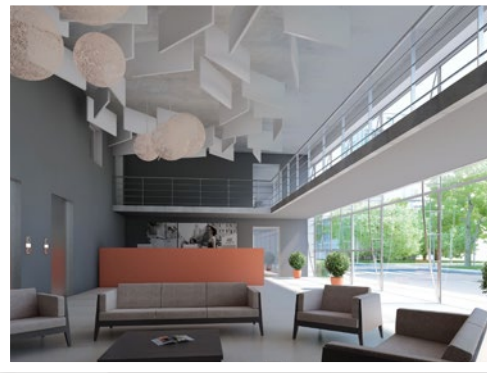
ROCKFON® Sonar Activity™, DMT, 2' x 2'



ROCKFON® Sonar®, CD x, 2' x 2'




ROCKFON® Island™, 4' x 6'



ROCKFON® Contour™, 12" x 48"

APPLICATIONS:





Office: When you need excellent acoustics and fire performance plus full design freedom, ROCKFON comes through with a wide selection of edges, the choice between smooth or lightly-textured surfaces, and a variety of color options.

Education: All ROCKFON white ceilings deliver excellent sound absorption performances and fire ratings. For critical areas, we also offer reinforced impact resistance products.

Commercial: To help shops and restaurants stand out and attract customers, our products are available in many different colors, surfaces and dimensions.

Healthcare: Stone wool is the ideal choice for healthcare spaces. It provides no sustenance to harmful micro-organisms. In addition, ROCKFON ceilings provide the winning combinations of sound absorption, fire safety and easy cleanability.

Leisure & Sport: ROCKFON impact-resistant ceilings are ideal for sports gymnasiums and related areas. ROCKFON ceilings are dimensionally stable at up to 100% relative humidity.

Industry: When you need a cost-effective way to bring fire safety and sound absorption to your industrial buildings, ROCKFON is the answer.

PERFORMANCES:

- Acoustics..... 30
 - The importance of acoustics 31
 - Acoustics is the science of sound 32
 - How to improve acoustics..... 34
 - How to compare ceiling acoustics 36
 - The influence of sound absorption on room-to-room sound insulation ... 38
 - ROCKFON® Sonar dB maximizes sound insulation..... 39
- Sustainability..... 40
- Fire performance 42
- Indoor environment 44
- Cleaning 46
- Hygiene 46
- Humidity resistance..... 48
- Impact resistance..... 49





A photograph of a classroom. In the foreground, a student with spiky hair is seen from the back, wearing a maroon hoodie, with their hand raised. In the background, a teacher is pointing at a chalkboard with a diagram of a heart. Other students are also visible, some with their hands raised.

Acoustics:

Stone wool is by nature a highly sound-absorbent material providing ROCKFON ceilings excellent acoustic properties. This allows you to achieve a high level of acoustical comfort without having to use ceilings with dimples, perforations or holes. The acoustical ratings of ROCKFON products have been tested in independent and certified laboratories. **ROCKFON Sonar dB** in particular provides a unique combination of high sound absorption and high sound insulation levels.



The importance of acoustics

Ambient noise levels affect people's health by increasing general stress levels. Continued exposure does not lead to habituation; in fact, the effects worsen (National Institute for Occupational Safety and Health).

Sound pressure levels in health care have risen significantly and consistently since 1960 (Study by Busch-Vishniac et al, 2005). Especially night time noise pollution is one of the main complaints of patients in hospitals.

Classrooms in the United States typically have speech intelligibility ratings of 75% or less, meaning every fourth spoken word is not understood (Seep, Glosemeyer, Hulce, Linn, & Aytar, 2000).

Loud or reverberant classrooms may cause teachers to raise their voices, leading to increased teacher stress and fatigue (Tiesler & Oberdörster, 2008).

After surveying 65,000 people over the past decade in North America, Europe, Africa and Australia, researchers at the University of California, Berkeley, report that more than half of office workers are dissatisfied with the level of "speech privacy", making it the leading complaint in offices everywhere (NY Times, may 2012). There is a close relationship between occupational noise exposure and all-cause mortality with industrial workers (CORDIS study, Melamed et al., 1999).

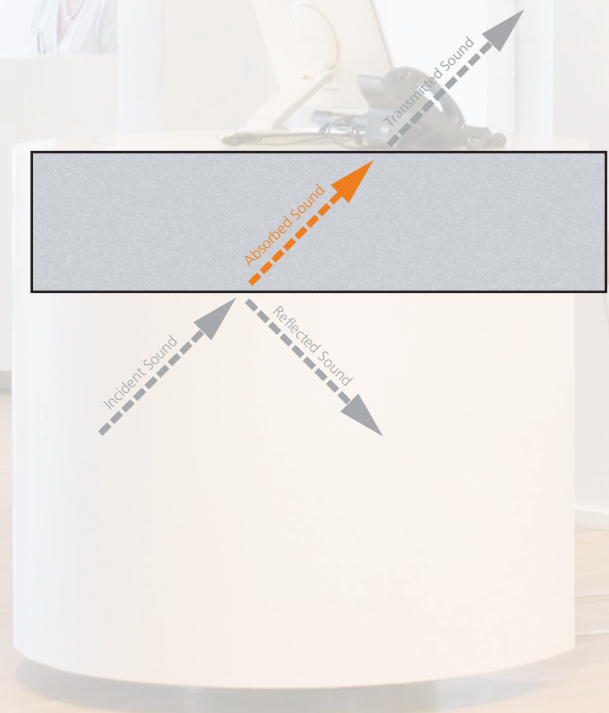
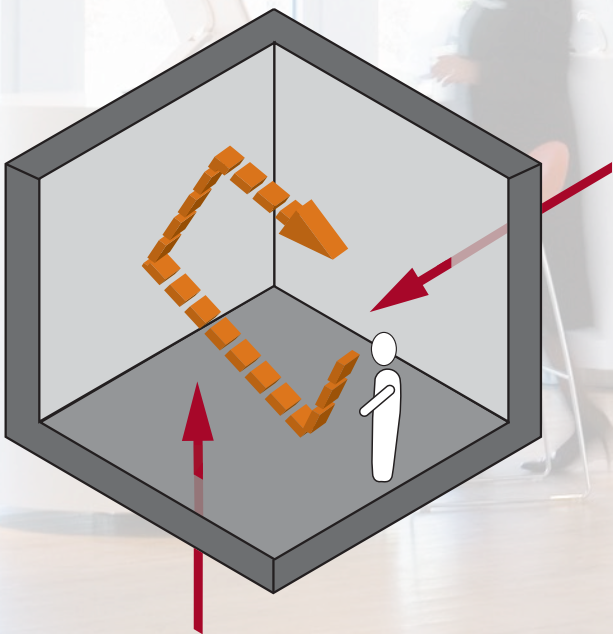
Acoustics is the science of sound

There are two main factors that determine the acoustics of a room

- Sound absorption: how sound behaves in a room
- Sound insulation: how much sound travels from one room to another

Sound absorption

When a sound wave hits a surface, part of the energy is reflected, the material absorbs part of it and the rest is transmitted.



Poor sound absorption can lead to

- Difficulty concentrating: Sounds come at the listener from all directions at more or less the same volume level. The direction of the sound source cannot be determined. The result is disorientation, which makes it hard to concentrate.
- Poor speech intelligibility: Reflected sound interferes with other sound sources, making speech inaudible or difficult to understand.
- The “cocktail party” effect: When the sound level is practically the same everywhere in the room, people talk louder and louder to make themselves heard.

Good sound absorption

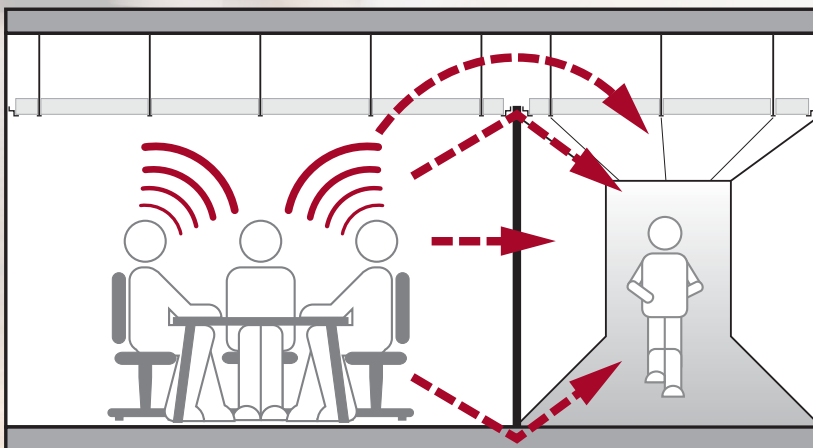
- Controls the ambient sound level
- Prevents echoes and their side effects
- Increases speech intelligibility

The quality of sound absorption is determined by the layout of the space and the materials used.

Sound insulation

Sound insulation controls how much sound travels from one room to another. Sound insulation influences the sound level in the receiving space. Good sound insulation helps to provide:

- More privacy between rooms
- Better concentration in the adjacent room



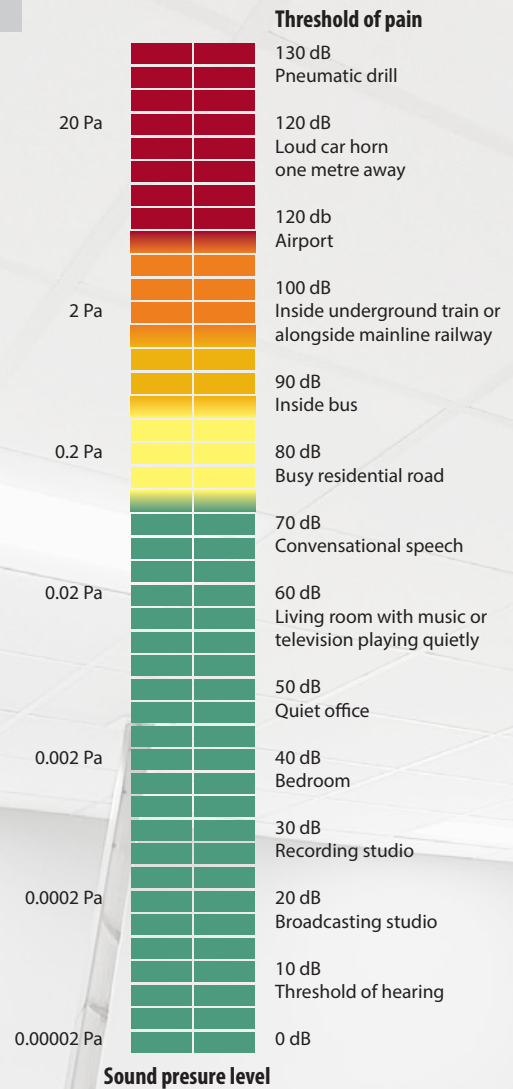
How to improve acoustics

With ROCKFON ceilings, you can control the four most important acoustical parameters of any space.

- Sound pressure
- Reverberation time
- Speech intelligibility
- Sound insulation

Sound pressure: how loud is it?

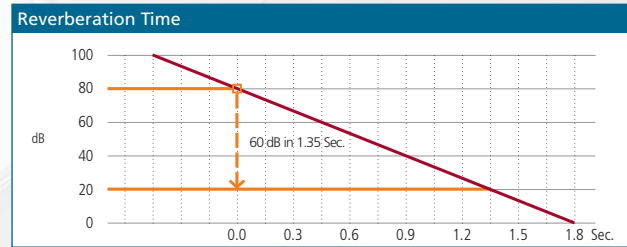
Sound pressure indicates how loud it is in the room. Peaks in sound pressure and a high level of average sound pressure can, over time, damage an individual's health. Average sound pressure is important for all environments, from factories to kindergartens. The sound pressure level in a room depends on the strength of the sound source, the room shape and the number and quality of sound-absorbing surfaces.



Source: http://www.osha.gov/dts/osta/otm/noise/health_effects/soundpropagation.html

Reverberation: is there an echo?

The most important factor in all regulations is reverberation time, which is defined as the time it takes for the sound pressure level to drop 60dB below its original level after the sound source is stopped. In most situations, a low reverberation time improves the acoustical comfort, such as in classrooms. However, in some situations, such as concert or conference halls, a higher reverberation time can improve listening comfort.



Reverberation time depends on the size and shape of the space, and the amount, quality and positioning of absorbing surfaces within the space. The more sound absorption in the room, the lower the reverberation time.

Speech intelligibility: can you hear me?

Speech intelligibility measures how well speech can be heard and understood in a room. Many factors influence speech intelligibility. These include the strength of the speech signal, the direction of the source sound, the level of background noise, the reverberation time of the room and the shape of the room.

Too much reverberation:

Wwa at tC ch hO ou ut !t t !

Incorrect reverberation:

Wwa at tC ch hO ou ut !t t !

Proper amount of reverberation:

Wwa at tC ch hO ou ut !t t !

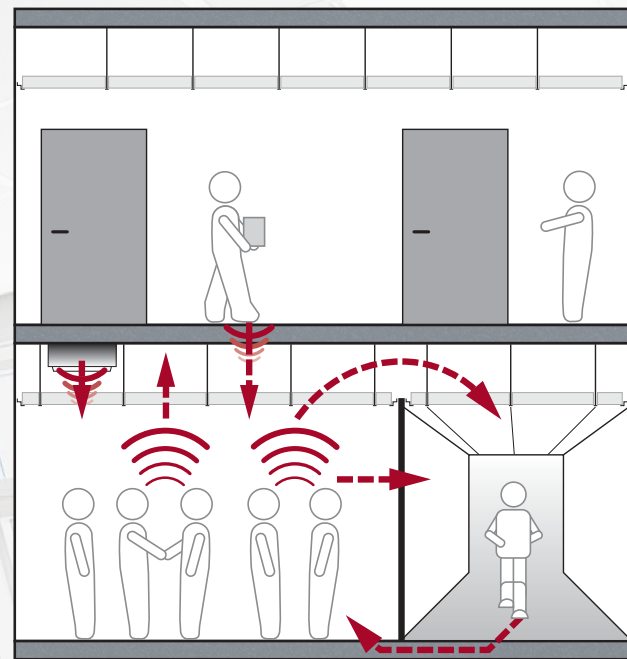
A good reverberation time will enable a listener to hear and understand the first word – and the sound from that will die out before the sound of the next word reaches the listener.

Wth Out! Wth Out!

Also, if the sound is drowned in background noise, the listener will have difficulty understanding what is being said. The normal reaction is to speak louder, leading to more reverberation and poorer speech intelligibility.

Sound insulation: what's going on next door?

Total sound insulation is the ability of a total construction (partitions, ceiling, floor and all connections) to prevent sound from travelling through the ceiling void and through building elements. Sound insulation of ceilings is measured using the Ceiling Attenuation Class value (CAC); sound insulation of walls is measured using the Sound Transmission Class value (STC). The higher the CAC/STC value (in dB) the better the performance.



Mass, airtightness and sound absorption are the main properties that determine the sound insulation capacity of any material.

How to compare ceiling acoustics

ROCKFON ceilings are made with a core of stone wool, which, by nature, is a highly sound-absorbent material. A high percentage of the sound waves that hit the stone wool are absorbed rather than reflected. Sound absorption is a key factor in all four acoustical parameters mentioned in the previous section. ROCKFON stone wool ceilings reduce sound pressure and reverberation time, while at the same time improving speech intelligibility and sound insulation.

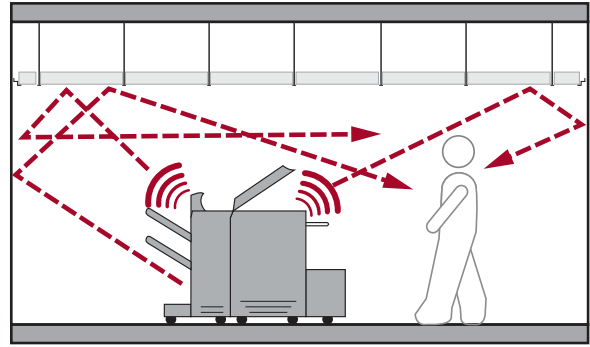
To help you compare the acoustical performance of different ceiling solutions, the industry uses several different ratings.

Noise reduction coefficient (NRC):

The Noise Reduction Coefficient or NRC refers to a surface's ability to reduce noise by absorbing sound. A higher score is better.

A ceiling with an NRC of 1.00 absorbs all sound. A ceiling with a NRC of 0.00 absorbs no sound. NRC is measured according to the ASTM C423 standard. NRC is important in areas where people converse in groups and high levels of noise are present, such as classrooms, open plan offices, shops, lobbies and meeting rooms.

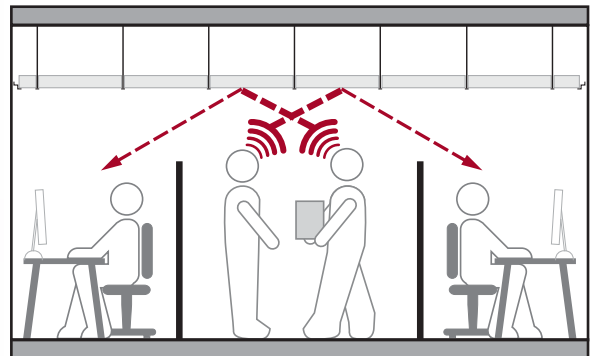
Most ROCKFON products have a NRC of 0.85 or above.



Articulation class (AC):

Articulation class (AC) indicates the speech privacy performance of a ceiling in an open plan environment, such as a space divided by half height walls. A rating below 150 indicates poor speech privacy performance; a rating above 180 indicates good performance. AC is measured and classified according to the ASTM E1111 standards. **ROCKFON Sonar, ROCKFON Alaska, ROCKFON Tropic and ROCKFON Koral have good AC ratings.**

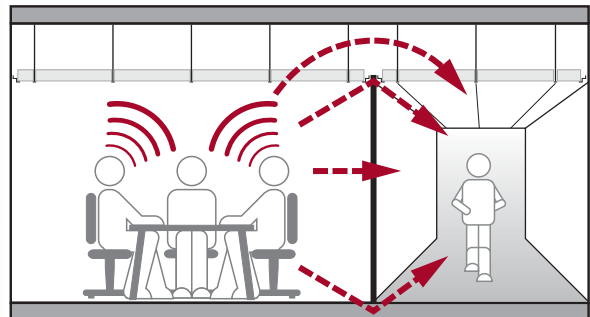
Please refer to the product datasheet.



Ceiling Attenuation Class (CAC):

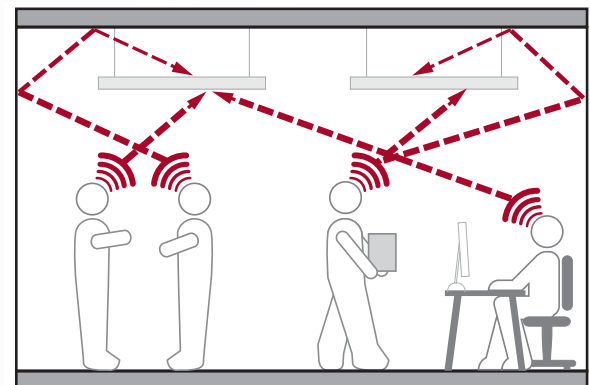
Ceiling Attenuation Class indicates the ceiling's ability to prevent airborne sound from traveling between adjacent rooms when the dividing wall does not connect with the structural ceiling. CAC is important between adjacent rooms and between rooms and a corridor. Higher values are better. CAC is measured in decibels according to the ASTM E1414 standard.

ROCKFON Sonar dB provides a CAC value up to 43 dB while maintaining good sound absorption (NRC = 0.85).



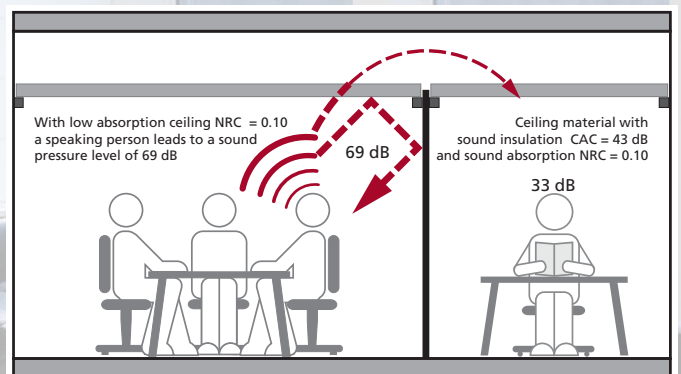
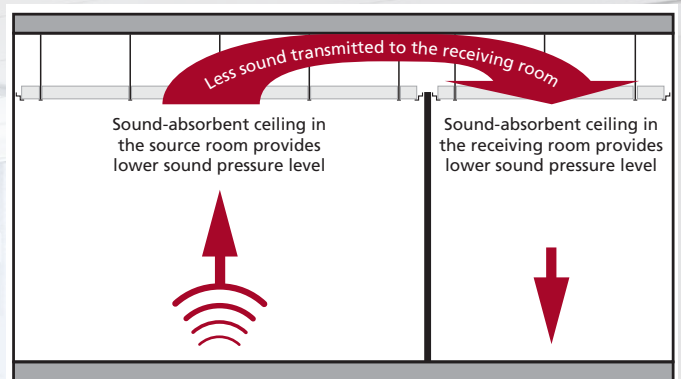
Sound Absorption in Sabin:

Absorption in Sabin indicates the sound absorption property of discrete elements like islands and baffles. The number of Sabins per unit is equal to the total surface of the unit that is exposed to sound or noise (measured in square foot) multiplied by the absorption coefficient of the material. Absorption in Sabin is measured according to the ASTM C423 standard. **ROCKFON Island and ROCKFON Contour provide high sound absorption where suspended ceilings are not suitable.**

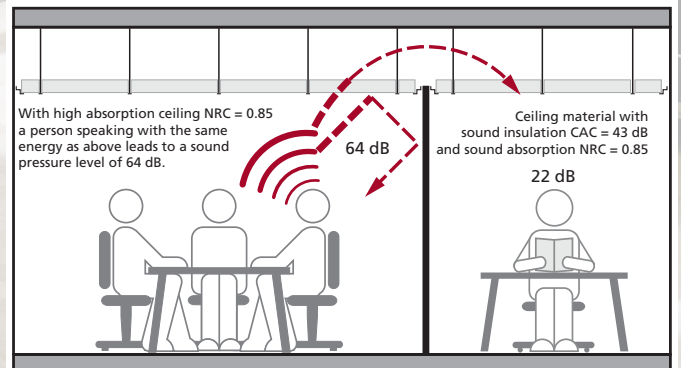


The influence of sound absorption on room-to-room sound insulation

In practice, there is a strong link between sound absorption and room-to-room sound insulation. This link is not accurately reflected in laboratory testing. In practice, two ceilings with the same CAC but with different sound absorption coefficients (NRC) will produce different levels of perceived sound insulation. The ceiling with the highest NRC will do a better job of lowering the sound pressure in both the sending and the receiving room. The impact of sound absorption on the perceived sound pressure level can be calculated and has been verified through in-situ testing.



- 5 dB Effect of a sound absorbing ceiling: - 11 dB





ROCKFON® Sonar dB™ maximizes sound insulation

ROCKFON® SONAR dB™ has been designed to block sound from travelling from room to room, providing a unique combination of both outstanding sound insulation and sound absorption in one panel.

For more information, please refer to the **ROCKFON® SONAR dB™** product datasheet.



Sustainability:

Building a sustainable future requires a balanced approach to the environment, the wellbeing of people and economic prosperity. Without all three, sustainability will remain an illusion rather than a rock-solid reality.

Reducing our impact on the planet: ROCKFON is the leading supplier of stone wool acoustic solutions and is a subsidiary of ROCKWOOL International – the world’s largest producer of stone wool – with over 70 years of experience. For many years, ROCKFON, ROXUL and the ROCKWOOL Group have been working to reduce their impact on the environment. Basalt rock is the primary raw material used to make ROCKFON and ROXUL stone wool products. It is a natural resource found in abundance around the world. Every year, volcanic activity and plate tectonics create new reserves of basalt rock – around 38,000 times more than the entire ROCKWOOL Group (with their North American divisions ROXUL and ROCKFON) extracts yearly. In order to reduce our environmental impact from transportation of the basalt rock, most of the 26 ROCKWOOL factories are located very close to extraction sites.

We fight waste wherever we can. ROCKFON ceiling tiles consist of up to 42% recycled content. The rest is made primarily of basalt rock – a material in essentially limitless supply. Ninety-five percent of ROCKWOOL and ROCKFON production waste is either recycled internally or sold to other industries as a raw material for use in their manufacturing processes. In addition, the ROCKWOOL Group collects over 600,000 tonnes of waste from other industries and puts it to good use in stone wool products.

All ROCKFON products sold in North America are manufactured under stringent environmental management and quality control systems (ISO 14001/ISO 9001).



ROCKFON products improve people's lives and are built to last: ROCKFON ceilings provide acoustic comfort by reducing noise and reverberation while increasing sound insulation. This helps improve the working, learning or healing conditions for occupants and increases the value for the owner.

Fireproof stone wool is the basis of all ROCKFON ceiling. Stone wool material does not burn and withstands temperatures of 2150 °F (1177 °C) without melting, thereby providing excellent fire safety and outperforming most fire performance standards. Our customer's fire safety is paramount to us.

ROCKFON products meet or exceed relevant legal requirements for indoor air quality and health, as shown by the independent certifications awarded to ROCKFON tiles. These certificates demonstrate the compliance of our products with the main requirements for volatile organic compounds (VOC), formaldehyde, ammonia, carcinogens, particles, odor, biosolubility and fibers.

ROCKFON products meet the California Department of Health Services Standard Practice for testing of VOC emissions.

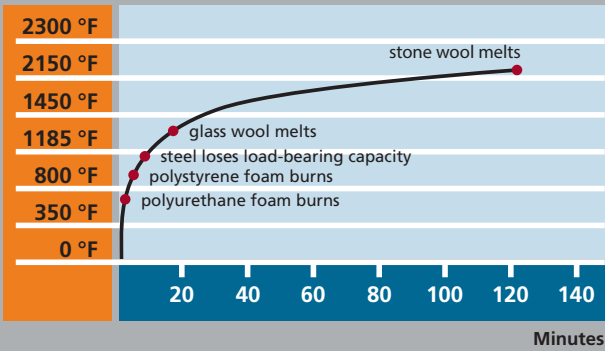
Stone wool is water repellent, and our ceiling tiles withstand up to 100% relative humidity while maintaining dimensional stability. Stone wool has no nutritional value and therefore it provides no sustenance to harmful micro-organisms. All these features combine to make ROCKFON ceilings a high-quality solution with excellent longevity and lifecycle value.

ROCKFON solutions can contribute to LEED® credits.



Fire performance:

Stone wool can withstand temperatures up to 2150 °F (1177 °C). **It does not contribute to the development and spread of fire.** It is made from basalt rock and is non-combustible.





Fire performance describes how well a building component can – for a stated period of time – hold back fire and prevent it from penetrating from one room to another. The basic criteria used to describe the fire performance of a product are:

- Flame spread
- Smoke development
- Non-combustibility

**Surface burning characteristics
(UL 723 (ASTM E84) / CAN / ULC S102):**

This is a standard method of testing for Surface Burning Characteristics of particular building materials. The test is designed to determine the relative surface burning characteristics of materials under specific test conditions. Results are expressed in terms of Flame Spread Index (FSI) and Smoke Developed Index (SDI). Many commercial applications require a Flame Spread Index of 25 or less and a Smoke Developed Index of 50 or less. Products labelled “FHC 25/50” (Fire Hazard Classification 25/50) or “Class A” (ASTM E1264) fulfil these requirements.

ROCKFON ceiling panels in North America are UL listed and outperform the fire requirements for ceilings.

Indoor environment:

Indoor air quality: ROCKFON ceiling tiles are made of water-repellent stone wool. Exposure to pollutants, contaminants and damp conditions can all put building occupants at risk for disease. ROCKFON ceilings provide a great line of defense against such health hazards. Stone wool has no nutritional value and therefore it provides no sustenance to harmful microorganisms, helping maintain a hygienic environment. All of our ROCKFON stone wool ceilings are GREENGUARD GOLD certified. That's the kind of solution that can help everyone feel better and breathe easier.

Due to their low particle emission, **ROCKFON Medical** products meet stringent requirements for air cleanliness in healthcare and clean room environments. **ROCKFON Medical** products are classified ISO Class 5 in accordance with ISO14644-1.

Thermal insulation: Stone wool is an excellent insulator and a vital component of an energy-efficient building. **ROCKFON Facett** combines good thermal insulation and sound absorption. For maximum thermal insulation, we recommend avoiding thermal bridges and performing condensation-risk analysis on the building.





Light reflectance: ROCKFON white ceilings reflect 83-86% of available light. In addition, they diffuse light to limit hot spots and glare. ROCKFON ceilings have a homogenous surface without any visible holes or perforations. **ROCKFON Sonar®**, **ROCKFON Alaska®**, **ROCKFON Tropic®** and **ROCKFON® Koral™** offer the highest levels of light reflectance.

Cleaning:

All ROCKFON products can be vacuum-cleaned with a soft brush attachment.

The following products can be cleaned using a damp cloth with cold or warm water (max. 104 °F) with a slightly alkaline detergent (pH between 7 and 9) without alcohol, ammonia or chlorine:

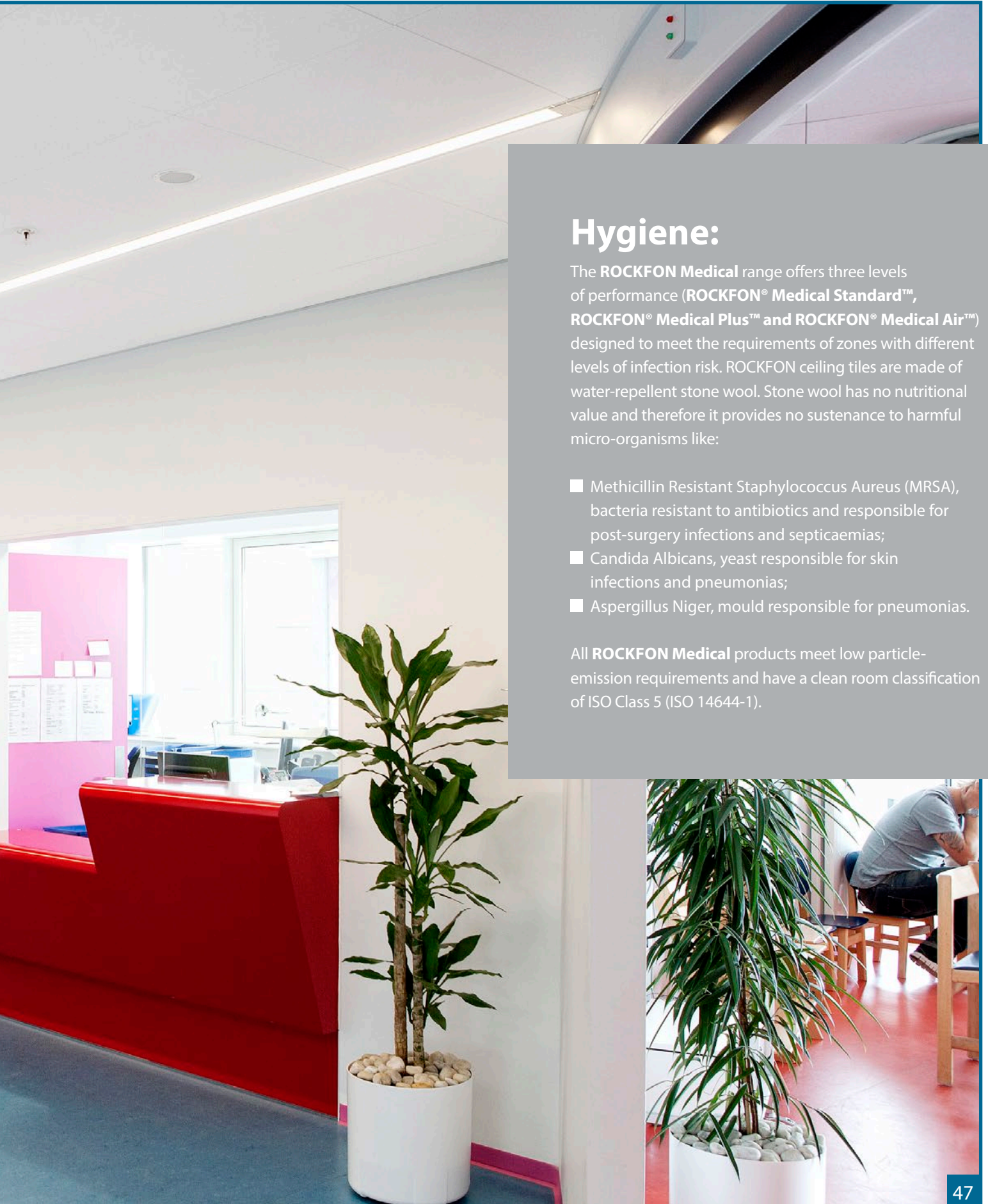
- ROCKFON Sonar®
- ROCKFON® Sonar Activity™
- ROCKFON® Sonar dB™
- ROCKFON® Medical Standard™, ROCKFON® Medical Plus™ and ROCKFON® Medical Air™
- ROCKFON® Koral™
- ROCKFON® Impact™

Cleaning with a sponge or damp cloth may render the surface slightly shinier. ROCKFON recommends cleaning the whole surface evenly for best results.

ROCKFON® Medical Plus™ and ROCKFON® Medical Air™ have a durable, highly water-repellent surface that withstands cleaning with diluted solutions of ammonia, chlorine, quaternary ammonium and hydrogen peroxide. It can also be disinfected twice a year by steam cleaning following a protocol defined by experts and using an adapted surface mop. The ceiling panels are also compatible with high-pressure cleaning, although this technique is not used very often in healthcare.

For more information on the cleaning properties of ROCKFON products, please refer to the product datasheet section.





Hygiene:

The **ROCKFON Medical** range offers three levels of performance (**ROCKFON® Medical Standard™**, **ROCKFON® Medical Plus™** and **ROCKFON® Medical Air™**) designed to meet the requirements of zones with different levels of infection risk. ROCKFON ceiling tiles are made of water-repellent stone wool. Stone wool has no nutritional value and therefore it provides no sustenance to harmful micro-organisms like:

- Methicillin Resistant Staphylococcus Aureus (MRSA), bacteria resistant to antibiotics and responsible for post-surgery infections and septicaemias;
- Candida Albicans, yeast responsible for skin infections and pneumonias;
- Aspergillus Niger, mould responsible for pneumonias.

All **ROCKFON Medical** products meet low particle-emission requirements and have a clean room classification of ISO Class 5 (ISO 14644-1).

Humidity resistance:

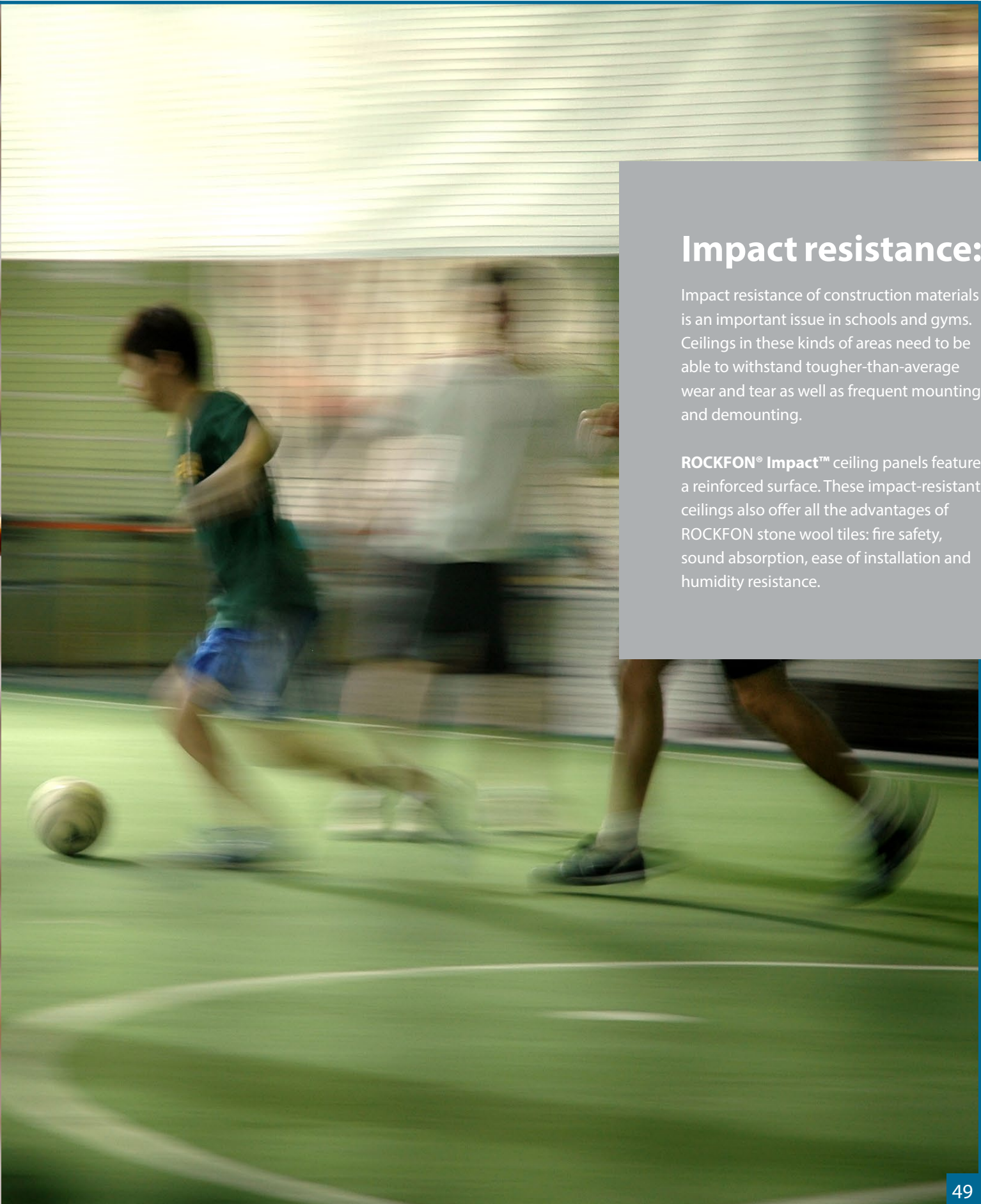
Humidity can weaken the structure of certain ceiling materials and cause them to sag. In extreme cases they may even fall out of the grid.

This will often happen in buildings under construction where the building is not hermetically sealed or materials have not dried out. Additionally, humidity levels are naturally high in wet rooms like kitchens and sanitary areas, and moisture problems can occur.

ROCKFON ceiling panels are dimensionally stable at up to 100% relative humidity. They can be installed at temperatures ranging from 32 °F to 104 °F. No acclimatization is necessary, and ROCKFON ceiling panels can be installed in the early stages of construction (when the windows are not fully sealed) without any risk of sagging.

All ROCKFON products come with a 30-year Limited Product Warranty. For more information and conditions, please contact your ROCKFON sales representative.





Impact resistance:

Impact resistance of construction materials is an important issue in schools and gyms. Ceilings in these kinds of areas need to be able to withstand tougher-than-average wear and tear as well as frequent mounting and demounting.

ROCKFON® Impact™ ceiling panels feature a reinforced surface. These impact-resistant ceilings also offer all the advantages of ROCKFON stone wool tiles: fire safety, sound absorption, ease of installation and humidity resistance.

PRODUCTS:

DESIGN WHITE:

- ROCKFON Sonar®52
- ROCKFON® Sonar Activity™54
- ROCKFON® Sonar™ dB56
- ROCKFON Alaska®58
- ROCKFON® Alaska™ dB.....60

DESIGN DECORATION:

- ROCKFON® Color-All™62
- ROCKFON® Cinema Black™64

BASIC WHITE:

- ROCKFON® Pacific™68
- ROCKFON Artic®70
- ROCKFON Koral™72
- ROCKFON® Tropic™74

SPECIAL AREA: HEALTHCARE

- ROCKFON® Medical Standard™76
- ROCKFON® Medical Plus™78
- ROCKFON® Medical Air™80

SPECIAL AREA: HYGIENE

- ROCKFON® Hygienic Plus™82

SPECIAL AREA: IMPACT RESISTANCE

- ROCKFON® Impact™84

SPECIAL AREA: INDUSTRIAL

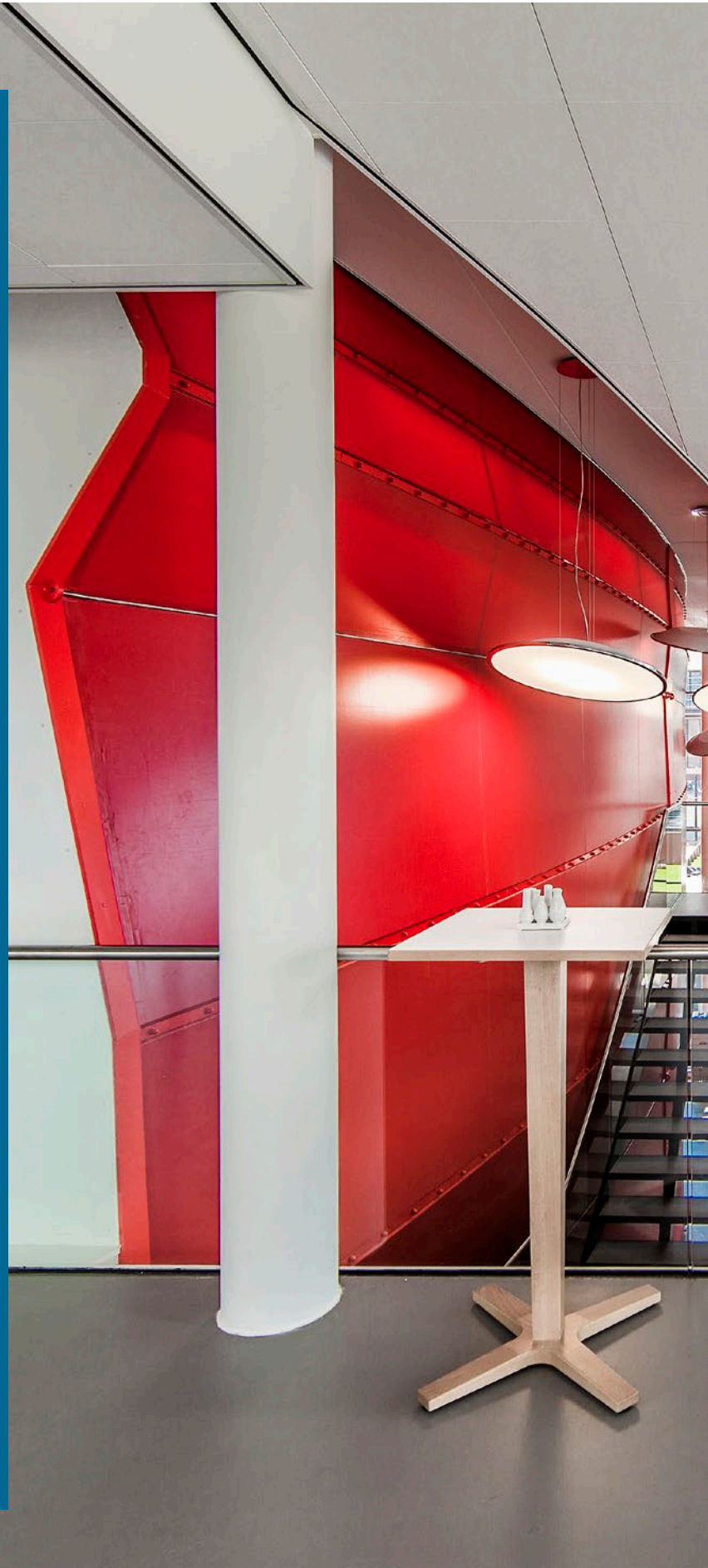
- ROCKFON® Facett™86
- ROCKFON® Industrial Opal/Nature/Black™88

NON-SUSPENDED CEILINGS: BAFFLES

- ROCKFON® Contour™90
- ROCKFON® Multiflex™ Baffles.....92

NON-SUSPENDED CEILINGS: ISLANDS

- ROCKFON® Island™94







ROCKFON Sonar®

FEATURES & BENEFITS:

- Elegant lightly-textured white surface
- High sound absorption (NRC = 0.90 - 0.95)
- High fire performance
- High light reflectance (LR = 0.85)
- Optimal design freedom thanks to a large selection of edges (lay-in, tegular, concealed)
- Available in a variety of sizes and formats, including planks

APPLICATIONS:

- Open-plan offices
- Single offices
- Classrooms
- Corridors
- Meeting rooms
- Foyers, lobbies and reception areas
- Retail/shops
- Waiting rooms
- Multifunctional rooms





Edge designation	Item number	Modular size	lbs/sqft	sqft/carton	NRC	CAC	AC	Fire Class	Light Reflectance	Thermal Insulation		
										R Value (BTU Units)	RSI Value (Watts Units)	
	SQ 16100	2' x 2' x 1"	0.69	64	0.95	22	190	A	0.85	3.5	0.62	
	SQ 16101	2' x 4' x 1"	0.69	64	0.95	22	190	A	0.85	3.5	0.62	
	SQ 16102	2' x 5' x 1"	0.69	80	0.95	22	190	A	0.85	3.5	0.62	
	SQ 16103	2' x 6' x 1"	0.69	96	0.95	22	190	A	0.85	3.5	0.62	
	SQ 16104	2' x 8' x 1"	0.69	128	0.95	22	190	A	0.85	3.5	0.62	
	SQ 16105	30" x 30" x 1"	0.69	37.5	0.95	22	190	A	0.85	3.5	0.62	
	SQ 16106	20" x 60" x 1"	0.69	66.67	0.95	22	190	A	0.85	3.5	0.62	
	SQ 16107	4' x 4' x 1"	0.69	128	0.95	22	190	A	0.85	3.5	0.62	
	SLN 16200	2' x 2' x 1"	0.69	32	0.95	22	190	A	0.85	3.5	0.62	
	SLN 16201	2' x 4' x 1"	0.69	64	0.95	22	190	A	0.85	3.5	0.62	
	SLN 16202	2' x 5' x 1"	0.69	60	0.95	22	190	A	0.85	3.5	0.62	
	SLN 16203	2' x 6' x 1"	0.69	72	0.95	22	190	A	0.85	3.5	0.62	
	SLN 16204	2' x 8' x 1"	0.69	96	0.95	22	190	A	0.85	3.5	0.62	
	SLN 16205	30" x 30" x 1"	0.69	37.5	0.95	22	190	A	0.85	3.5	0.62	
	SLN 16207	4' x 4' x 1"	0.69	96	0.95	22	190	A	0.85	3.5	0.62	
	SLT 16300	2' x 2' x 1"	0.69	32	0.95	22	190	A	0.85	3.5	0.62	
	SLT 16301	2' x 4' x 1"	0.69	64	0.95	22	190	A	0.85	3.5	0.62	
	SLT 16302	2' x 5' x 1"	0.69	60	0.95	22	190	A	0.85	3.5	0.62	
	SLT 16303	2' x 6' x 1"	0.69	72	0.95	22	190	A	0.85	3.5	0.62	
	SLT 16304	2' x 8' x 1"	0.69	96	0.95	22	190	A	0.85	3.5	0.62	
	SLT 16305	30" x 30" x 1"	0.69	37.5	0.95	22	190	A	0.85	3.5	0.62	
	SLT 16307	4' x 4' x 1"	0.69	96	0.95	22	190	A	0.85	3.5	0.62	
	DMT	14350	2' x 2' x 3/4"	0.69	40	0.70	22	190	A	0.85	2.6	0.46
	SLP	16457	4' x 4' x 1"	0.84	96	0.90	25	190	A	0.85	3.5	0.62
	SCD 14550	2' x 2' x 3/4"	0.69	40	0.90	22	190	A	0.85	2.6	0.46	
	SCD 14551	2' x 4' x 3/4"	0.69	80	0.90	22	190	A	0.85	2.6	0.46	
	SCD 14552	2' x 5' x 3/4"	0.69	80	0.90	22	190	A	0.85	2.6	0.46	
	SCD 16554	2' x 8' x 1"	0.84	96	0.90	25	190	A	0.85	3.5	0.62	
	SCD 16555	30" x 30" x 1"	0.84	37.5	0.90	25	190	A	0.85	3.5	0.62	
	CDX 14600	2' x 2' x 7/8"	0.75	40	0.90	22	190	A	0.85	3.1	0.54	
	CDX 14601	2' x 4' x 7/8"	0.75	80	0.90	22	190	A	0.85	3.1	0.54	
	CDX 14603	2' x 6' x 7/8"	0.75	72	0.90	22	190	A	0.85	3.1	0.54	
	CDX 16604	2' x 8' x 1"	0.84	96	0.90	25	190	A	0.85	3.5	0.62	
	CDX 16605	30" x 30" x 1"	0.84	37.5	0.90	25	190	A	0.85	3.5	0.62	

MATERIAL:

Stone wool (Mineral Wool) ceiling tiles

SURFACE FINISH:

Factory painted glass scrim

FIRE PERFORMANCE:

Surface burning characteristics: UL723 (ASTM E84) Flame Spread Index 0, Smoke developed Index 0 (UL Labeled). CAN/ULC S102 Flame Spread Index 10, Smoke developed Index 5.

ASTM E1264 CLASSIFICATION:

Type XX - Stone wool base with membrane-faced overlay, Pattern E

SAG RESISTANCE:

ROCKFON ceiling tiles are dimensionally stable even at high humidity levels of up to 100% relative humidity and can be installed at all temperatures ranging from 32 °F to 104 °F. No acclimatization is needed. ROCKFON ceiling tiles can be installed during the very early stage of the build (when windows are

not fully sealed) without any risk of deflection of the tiles. The low weight, stability and nonhygroscopic character of ROCKFON tiles will limit the weight of the fully installed ceiling whilst retaining its declared properties even when applied in infrequently heated and unheated rooms without condensation.

VOC/FORMALDEHYDE EMISSIONS:

The product fulfils requirements for low emitting acoustic ceiling tiles and meets the California Department of Health Services Standard Method V1.1 (February 2012) "Standard method for the Testing and Evaluation of Volatile Organic Chemical Emissions from Indoor Sources Using Environmental Chambers (Section 01350)." Selected potential applications: LEED, CHPS and CALGreen. All ROCKFON stone wool acoustic ceiling solutions are GREENGUARD Gold certified to GREENGUARD standards for low chemical emissions into indoor air during product usage.

HYGIENIC PROPERTIES:

ROCKFON ceiling tiles are made of water repellent stone wool. Stone wool has no

nutritional value and therefore it provides no sustenance to harmful micro-organisms.

CLEANING PROPERTIES:

The surface can be vacuum cleaned with a soft brush attachment. It can also be cleaned using a damp cloth with cold or warm water (max. 104 °F) with a slightly alkaline detergent (pH between 7 and 9) without alcohol, ammonia or chlorine. Cleaning with a sponge or damp cloth may render the surface slightly shinier and we therefore recommend cleaning the whole surface evenly for best results.

WARRANTY INFORMATION:

30-Year Limited Product Warranty. See www.rockfon.com

SUSTAINABILITY:

ROCKFON stone wool ceiling tiles are primarily made from abundantly available basalt rock and contain up to 42% recycled materials. ROCKFON products supplied in North America are produced in ISO9001/ISO14001 certified factories.



ROCKFON® Sonar Activity™

FEATURES & BENEFITS:

- Elegant lightly-textured white surface
- High sound absorption (NRC = 0.90), both suspended and direct installed on to soffits
- High fire performance
- High light reflectance (LR = 0.85)
- Makes direct installation on to soffits possible, maximizing ceiling height

APPLICATIONS:

- Open plan offices
- Single offices
- Classrooms
- Restaurants
- Foyers, lobbies and reception areas
- Waiting rooms

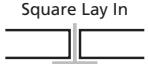
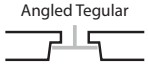



ROCKFON® Sonar Activity™

 RECYCLED CONTENT: up to 40%

BUDGET:
\$\$\$\$\$



Edge designation	Item number	Modular size	lbs/sqft	sqft/carton	NRC	CAC	AC	Fire Class	Light Reflectance	Thermal Insulation		
										R Value (BTU Units)	RSI Value (Watts Units)	
 Square Lay In	SQ	15100	2' x 2' x 1-1/2"	1.30	40	0.90	22	180	A	0.85	5.3	0.92
 Angled Tegular	SLT	15300	2' x 2' x 1-1/2"	1.30	20	0.90	22	180	A	0.85	5.3	0.92
 Direct Mount	DMT	15350	2' x 2' x 1-1/2"	1.30	20	0.90	22	180	A	0.85	5.3	0.92

MATERIAL:

Stone wool (Mineral Wool) ceiling tiles

SURFACE FINISH:

Factory painted glass scrim

FIRE PERFORMANCE:

Surface burning characteristics: UL723 (ASTM E84) Flame Spread Index 0, Smoke developed Index 0 (UL Labeled). CAN/ULC S102 Flame Spread Index 10, Smoke developed Index 5.

ASTM E1264 CLASSIFICATION:

Type XX - Stone wool base with membrane-faced overlay, Pattern E

SAG RESISTANCE:

ROCKFON ceiling tiles are dimensionally stable even at high humidity levels of up to 100% relative humidity and can be installed at all temperatures ranging from 32 °F to 104 °F. No acclimatization is needed. ROCKFON ceiling tiles can be installed during the very early stage of the build (when windows are not fully sealed) without any risk of deflection of the tiles. The low weight, stability and non-hygroscopic character of ROCKFON tiles will limit the weight

of the fully installed ceiling whilst retaining its declared properties even when applied in infrequently heated and unheated rooms without condensation.

VOC/FORMALDEHYDE EMISSIONS:

The product fulfils requirements for low emitting acoustic ceiling tiles and meets the California Department of Health Services Standard Method V1.1 (February 2012) "Standard method for the Testing and Evaluation of Volatile Organic Chemical Emissions from Indoor Sources Using Environmental Chambers (Section 01350)." Selected potential applications: LEED, CHPS and CALGreen. All ROCKFON stone wool acoustic ceiling solutions are GREENGUARD Gold certified to GREENGUARD standards for low chemical emissions into indoor air during product usage.

HYGIENIC PROPERTIES:

ROCKFON ceiling tiles are made of water repellent stone wool. Stone wool has no nutritional value and therefore it provides no sustenance to harmful micro-organisms.

CLEANING PROPERTIES:

The surface can be vacuum cleaned with a soft brush attachment. It can also be cleaned using a damp cloth with cold or warm water (max. 104 °F) with a slightly alkaline detergent (pH between 7 and 9) without alcohol, ammonia or chlorine. Cleaning with a sponge or damp cloth may render the surface slightly shinier and we therefore recommend cleaning the whole surface evenly for best results.

WARRANTY INFORMATION:

30-Year Limited Product Warranty. See www.rockfon.com

SUSTAINABILITY:

ROCKFON stone wool ceiling tiles are primarily made from abundantly available basalt rock and contain up to 42% recycled materials. ROCKFON products supplied in North America are produced in ISO9001/ISO14001 certified factories.



ROCKFON® Sonar™ dB

FEATURES & BENEFITS:

- Elegant lightly-textured white surface
- Optimal acoustical comfort combining high sound insulation (CAC up to 43 dB) with high sound absorption (NRC = 0.85)
- High fire performance
- High light reflection (LR = 0.85)

APPLICATIONS:

- Single offices
- Meeting rooms
- Executive and legal offices
- Healthcare offices and patient rooms





Edge designation	Item number	Modular size	lbs/sqft	sqft/carton	NRC	CAC	AC	Fire Class	Light Reflectance	Thermal Insulation		
										R Value (BTU Units)	RSI Value (Watts Units)	
Square Lay In	SQ	20100	2' x 2' x 1"	0.69	64	0.85	33	190	A	0.85	3.5	0.62
Square Tegular Narrow	SLN	20200	2' x 2' x 1"	0.69	32	0.85	33	190	A	0.85	3.5	0.62
Angled Tegular	SLT	20300	2' x 2' x 1"	0.69	32	0.85	33	190	A	0.85	3.5	0.62
Square Lay In	SQ	21100	2' x 2' x 1-1/4"	0.99	48	0.85	35	180	A	0.85	4.4	0.77
Square Tegular Narrow	SLN	21200	2' x 2' x 1-1/4"	0.99	24	0.85	35	180	A	0.85	4.4	0.77
Angled Tegular	SLT	21300	2' x 2' x 1-1/4"	0.99	24	0.85	35	180	A	0.85	4.4	0.77
Shiplap	SLP	21450	2' x 2' x 1-1/4"	0.99	24	0.85	35	180	A	0.85	4.4	0.77
Square Lay In	SQ	22100	2' x 2' x 1-1/2"	1.42	40	0.85	37	170	A	0.85	5.3	0.92
Square Tegular Narrow	SLN	22200	2' x 2' x 1-1/2"	1.42	20	0.85	37	170	A	0.85	5.3	0.92
Angled Tegular	SLT	22300	2' x 2' x 1-1/2"	1.42	20	0.85	37	170	A	0.85	5.3	0.92
Shiplap	SLP	22450	2' x 2' x 1-1/2"	1.42	20	0.85	37	170	A	0.85	5.3	0.92
Square Lay In	SQ	23100	2' x 2' x 2"	1.61	32	0.85	43	180	A	0.85	7.0	1.23
Square Tegular Narrow	SLN	23200	2' x 2' x 2"	1.61	16	0.85	43	180	A	0.85	7.0	1.23
Angled Tegular	SLT	23300	2' x 2' x 2"	1.61	16	0.85	43	180	A	0.85	7.0	1.23
Shiplap	SLP	23450	2' x 2' x 2"	1.61	16	0.85	43	180	A	0.85	7.0	1.23

MATERIAL:

Stone wool (Mineral Wool) ceiling tiles

SURFACE FINISH:

Factory painted glass scrim

FIRE PERFORMANCE:

Surface burning characteristics: UL723 (ASTM E84) Flame Spread Index 0-5, Smoke developed Index 0-5 (UL Labeled). CAN/ULC S102 Flame Spread Index 10-15, Smoke developed Index 5.

ASTM E1264 CLASSIFICATION:

Type XX - Stone wool base with membrane-faced overlay, Pattern E

SAG RESISTANCE:

ROCKFON ceiling tiles are dimensionally stable even at high humidity levels of up to 100%* relative humidity and can be installed at all temperatures ranging from 32 °F to 104 °F. No acclimatization is needed. ROCKFON ceiling tiles can be installed during the very early stage of the build (when windows are not fully sealed) without any risk of deflection of the tiles. The

low weight, stability and nonhygroscopic character of ROCKFON tiles will limit the weight of the fully installed ceiling whilst retaining its declared properties even when applied in infrequently heated and unheated rooms without condensation.

*Excludes items 23100, 23200, 23300 and 23450.

VOC/FORMALDEHYDE EMISSIONS:

The product fulfils requirements for low emitting acoustic ceiling tiles and meets the California Department of Health Services Standard Method V1.1 (February 2012) "Standard method for the Testing and Evaluation of Volatile Organic Chemical Emissions from Indoor Sources Using Environmental Chambers (Section 01350)." Selected potential applications: LEED, CHPS and CALGreen. All ROCKFON stone wool acoustic ceiling solutions are GREENGUARD Gold certified to GREENGUARD standards for low chemical emissions into indoor air during product usage.

HYGIENIC PROPERTIES:

ROCKFON ceiling tiles are made of water repellent stone wool. Stone wool has no

nutritional value and therefore it provides no sustenance to harmful micro-organisms.

CLEANING PROPERTIES:

The surface can be vacuum cleaned with a soft brush attachment. It can also be cleaned using a damp cloth with cold or warm water (max. 104 °F) with a slightly alkaline detergent (pH between 7 and 9) without alcohol, ammonia or chlorine. Cleaning with a sponge or damp cloth may render the surface slightly shinier and we therefore recommend cleaning the whole surface evenly for best results.

WARRANTY INFORMATION:

30-Year Limited Product Warranty. See www.rockfon.com

SUSTAINABILITY:

ROCKFON stone wool ceiling tiles are primarily made from abundantly available basalt rock and contain up to 42% recycled materials. ROCKFON products supplied in North America are produced in ISO9001/ISO14001 certified factories.



ROCKFON Alaska®

FEATURES & BENEFITS:

- Elegant smooth white surface
- High sound absorption (NRC = 0.90)
- High fire performance
- High light reflectance (LR = 0.86)
- Optimal design freedom thanks to a large selection of edges (lay-in, tegular and concealed)

APPLICATIONS:

- Open plan offices
- Single offices
- Classrooms
- Corridors
- Meeting rooms
- Foyers , lobbies and reception areas
- Retail/shops
- Waiting rooms
- Multifunctional rooms





Edge designation	Item number	Modular size	lbs/sqft	sqft/carton	NRC	CAC	AC	Fire Class	Light Reflectance	Thermal Insulation		
										R Value (BTU Units)	RSI Value (Watts Units)	
	SQ	10100	2' x 2' x 3/4"	0.69	80	0.90	22	180	A	0.86	2.6	0.46
	SQ	10101	2' x 4' x 3/4"	0.69	80	0.90	22	180	A	0.86	2.6	0.46
	SLN	10200	2' x 2' x 3/4"	0.69	40	0.90	22	180	A	0.86	2.6	0.46
	SLN	10201	2' x 4' x 3/4"	0.69	80	0.90	22	180	A	0.86	2.6	0.46
	SLT	10300	2' x 2' x 3/4"	0.69	40	0.90	22	180	A	0.86	2.6	0.46
	SLT	10301	2' x 4' x 3/4"	0.69	80	0.90	22	180	A	0.86	2.6	0.46
	DMT	10350	2' x 2' x 3/4"	0.69	40	0.70	22	180	A	0.86	2.6	0.46
	SCD	10550	2' x 2' x 3/4"	0.69	40	0.90	22	180	A	0.86	2.6	0.46
	SCD	10551	2' x 4' x 3/4"	0.69	80	0.90	22	180	A	0.86	2.6	0.46
	CDX	10600	2' x 2' x 7/8"	0.75	40	0.90	22	180	A	0.86	3.1	0.54
	CDX	10601	2' x 4' x 7/8"	0.75	80	0.90	22	180	A	0.86	3.1	0.54

MATERIAL:

Stone wool (Mineral Wool) ceiling tiles

SURFACE FINISH:

Factory painted glass scrim

FIRE PERFORMANCE:

Surface burning characteristics: UL723 (ASTM E84) Flame Spread Index 0, Smoke developed Index 5 (UL Labeled). CAN/ULC S102 Flame Spread Index 5, Smoke developed Index 0.

ASTM E1264 CLASSIFICATION:

Type XX - Stone wool base with membrane-faced overlay, Pattern G

SAG RESISTANCE:

ROCKFON ceiling tiles are dimensionally stable even at high humidity levels of up to 100% relative humidity and can be installed at all temperatures ranging from 32 °F to 104 °F. No acclimatization is needed. ROCKFON ceiling tiles can be installed during the very early stage of the build (when windows are not fully

sealed) without any risk of deflection of the tiles. The low weight, stability and nonhygroscopic character of ROCKFON tiles will limit the weight of the fully installed ceiling whilst retaining its declared properties even when applied in infrequently heated and unheated rooms without condensation.

VOC/FORMALDEHYDE EMISSIONS:

The product fulfils requirements for low emitting acoustic ceiling tiles and meets the California Department of Health Services Standard Method V1.1 (February 2012) "Standard method for the Testing and Evaluation of Volatile Organic Chemical Emissions from Indoor Sources Using Environmental Chambers (Section 01350)." Selected potential applications: LEED, CHPS and CALGreen. All ROCKFON stone wool acoustic ceiling solutions are GREENGUARD Gold certified to GREENGUARD standards for low chemical emissions into indoor air during product usage.

HYGIENIC PROPERTIES:

ROCKFON ceiling tiles are made of water repellent stone wool. Stone wool has no nutritional value and therefore it provides no sustenance to harmful micro-organisms.

CLEANING PROPERTIES:

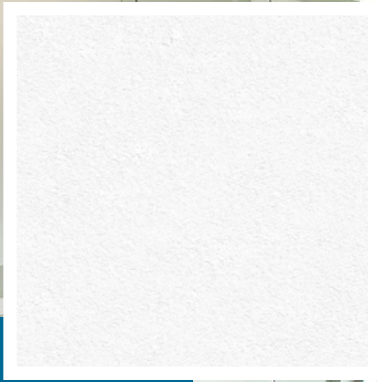
The surface can be vacuum-cleaned with a soft brush attachment.

WARRANTY INFORMATION:

30-Year Limited Product Warranty. See www.rockfon.com

SUSTAINABILITY:

ROCKFON stone wool ceiling tiles are primarily made from abundantly available basalt rock and contain up to 42% recycled materials. ROCKFON products supplied in North America are produced in ISO9001/ISO14001 certified factories.



ROCKFON® Alaska™ dB

FEATURES & BENEFITS:

- Elegant smooth white surface
- Combines high sound insulation (CAC - 35) with high sound absorption (NRC = 0.85)
- High fire performance
- High light reflection (LR = 0.86)
- Available in square lay-in and tegular

APPLICATIONS:

- Single offices
- Meeting rooms
- Executive and Legal offices
- Medical Offices
- Patient Rooms



ROCKFON® Alaska™ dB



RECYCLED CONTENT: up to 39%

BUDGET:
\$\$\$\$\$



Edge designation	Item number	Modular size	lbs/sqft	sqft/carton	NRC	CAC	AC	Fire Class	Light Reflectance	Thermal Insulation		
										R Value (BTU Units)	RSI Value (Watts Units)	
 Square Lay In	SQ	12100	2' x 2' x 1"	0.69	64	0.85	35	180	A	0.86	3.5	0.62
	SQ	12101	2' x 4' x 1"	0.69	64	0.85	35	180	A	0.86	3.5	0.62
 Square Tegular Narrow	SLN	12200	2' x 2' x 1"	0.69	32	0.85	35	180	A	0.86	3.5	0.62
	SLN	12201	2' x 4' x 1"	0.69	64	0.85	35	180	A	0.86	3.5	0.62
 Angled Tegular	SLT	12300	2' x 2' x 1"	0.69	32	0.85	35	180	A	0.86	3.5	0.62
	SLT	12301	2' x 4' x 1"	0.69	64	0.85	35	180	A	0.86	3.5	0.62

MATERIAL:

Stone wool (Mineral Wool) ceiling tiles

SURFACE FINISH:

Factory painted glass scrim

FIRE PERFORMANCE:

Surface burning characteristics: UL723 (ASTM E84) Flame Spread Index 0-5, Smoke developed Index 0-5 (UL Labeled). CAN/ULC S102 Flame Spread Index 10-15, Smoke developed Index 5.

ASTM E1264 CLASSIFICATION:

Type XX - Stone wool base with membrane-faced overlay, Pattern G

SAG RESISTANCE:

ROCKFON ceiling tiles are dimensionally stable even at high humidity levels of up to 100% relative humidity and can be installed at all temperatures ranging from 32 °F to 104 °F. No acclimatization is needed. ROCKFON ceiling tiles can be installed during the very early

stage of the build (when windows are not fully sealed) without any risk of deflection of the tiles. The low weight, stability and nonhygroscopic character of ROCKFON tiles will limit the weight of the fully installed ceiling whilst retaining its declared properties even when applied in infrequently heated and unheated rooms without condensation.

VOC/FORMALDEHYDE EMISSIONS:

The product fulfils requirements for low emitting acoustic ceiling tiles and meets the California Department of Health Services Standard Method V1.1 (February 2012) "Standard method for the Testing and Evaluation of Volatile Organic Chemical Emissions from Indoor Sources Using Environmental Chambers (Section 01350)." Selected potential applications: LEED, CHPS and CALGreen. All ROCKFON stone wool acoustic ceiling solutions are GREENGUARD Gold certified to GREENGUARD standards for low chemical emissions into indoor air during product usage.

HYGIENIC PROPERTIES:

ROCKFON ceiling tiles are made of water repellent stone wool. Stone wool has no nutritional value and therefore it provides no sustenance to harmful micro-organisms.

CLEANING PROPERTIES:

The surface can be vacuum-cleaned with a soft brush attachment.

WARRANTY INFORMATION:

30-Year Limited Product Warranty. See www.rockfon.com

SUSTAINABILITY:

ROCKFON stone wool ceiling tiles are primarily made from abundantly available basalt rock and contain up to 42% recycled materials. ROCKFON products supplied in North America are produced in ISO9001/ISO14001 certified factories.



ROCKFON® Color-all™

FEATURES & BENEFITS:

- 34 exclusive colors organized in 6 themes
- Smooth surface
- Excellent sound absorption (NRC = 0.85-0.95)
- High fire performance
- Optimal design freedom due to the variety of edges (lay-in, tegular and concealed) and colors

APPLICATIONS:

- Foyers
- Auditoriums
- Restaurants, cafeteria
- Retail/shops
- Schools
- Waiting rooms
- Leisure
- Museums
- Theatres





Edge designation	Item number	Modular size	lbs/sqft	sqft/carton	NRC	CAC	AC	Fire Class	Light Reflectance	Thermal Insulation	
										R Value (BTU Units)	RSI Value (Watts Units)
	SQ 11100	2' x 2' x 5/8"	0.47	112	0.85	22	-	A	Color dependant	2.2	0.39
	SQ 11101	2' x 4' x 5/8"	0.47	112	0.85	22	-	A	Color dependant	2.2	0.39
	SL 11250	2' x 2' x 3/4"	0.69	40	0.95	22	-	A	Color dependant	2.6	0.46
	SL 11251	2' x 4' x 3/4"	0.69	80	0.95	22	-	A	Color dependant	2.6	0.46
	SLN 11200	2' x 2' x 3/4"	0.69	40	0.95	22	-	A	Color dependant	2.6	0.46
	SLN 11201	2' x 4' x 3/4"	0.69	80	0.95	22	-	A	Color dependant	2.6	0.46
	CDX 11600	2' x 2' x 7/8"	0.75	40	0.95	22	-	A	Color dependant	3.1	0.54
	CDX 11601	2' x 4' x 7/8"	0.75	80	0.95	22	-	A	Color dependant	3.1	0.54

MATERIAL:

Stone wool (Mineral Wool) ceiling tiles

SURFACE FINISH:

Factory painted glass scrim

FIRE PERFORMANCE:

Surface burning characteristics: UL723 (ASTM E84) Flame Spread Index 5, Smoke developed Index 0 (UL Labeled). CAN/ULC S102 Flame Spread Index 15, Smoke developed Index 5.

ASTM E1264 CLASSIFICATION:

Type XX - Stone wool base with membrane-faced overlay, Pattern G

SAG RESISTANCE:

ROCKFON ceiling tiles are dimensionally stable even at high humidity levels of up to 100% relative humidity and can be installed at all temperatures ranging from 32 °F to 104 °F. No acclimatization is needed. ROCKFON ceiling tiles can be installed during the very early stage of the build (when windows are not

fully sealed) without any risk of deflection of the tiles. The low weight, stability and non-hygroscopic character of ROCKFON tiles will limit the weight of the fully installed ceiling whilst retaining its declared properties even when applied in infrequently heated and unheated rooms without condensation.

VOC/FORMALDEHYDE EMISSIONS:

The product fulfils requirements for low emitting acoustic ceiling tiles and meets the California Department of Health Services Standard Method V1.1 (February 2012) "Standard method for the Testing and Evaluation of Volatile Organic Chemical Emissions from Indoor Sources Using Environmental Chambers (Section 01350)." Selected potential applications: LEED, CHPS and CALGreen. All ROCKFON stone wool acoustic ceiling solutions are GREENGUARD Gold certified to GREENGUARD standards for low chemical emissions into indoor air during product usage.

HYGIENIC PROPERTIES:

ROCKFON ceiling tiles are made of water repellent stone wool. Stone wool has no nutritional value and therefore it provides no sustenance to harmful micro-organisms.

CLEANING PROPERTIES:

The surface can be vacuum-cleaned with a soft brush attachment.

WARRANTY INFORMATION:

30-Year Limited Product Warranty. See www.rockfon.com

SUSTAINABILITY:

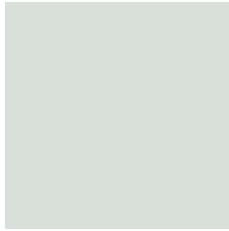
ROCKFON stone wool ceiling tiles are primarily made from abundantly available basalt rock and contain up to 42% recycled materials. ROCKFON products supplied in North America are produced in ISO9001/ISO14001 certified factories.

CITYTONES

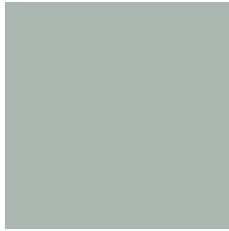
STONE - 701
Light reflectance: 0.55



PLASTER - 702
Light reflectance: 0.58



GRAVEL - 703
Light reflectance: 0.34



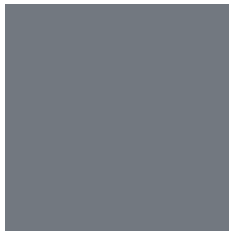
MASTIC - 704
Light reflectance: 0.33



ZINC - 705
Light reflectance: 0.33



CONCRETE - 706
Light reflectance: 0.16

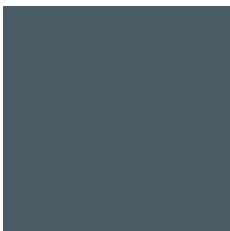


TARMAC - 707
Light reflectance: 0.13

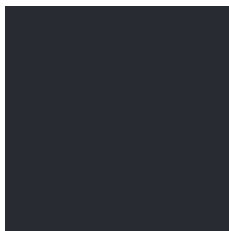


Natural
tones

ANTHRACITE - 708
Light reflectance: 0.07



BLACK - 08
Light reflectance: 0.04



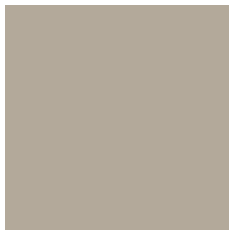
STUCCO - 720
Light reflectance: 0.70



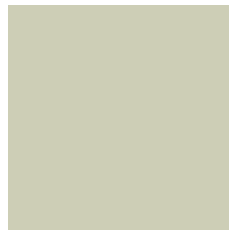
CHALK - 721
Light reflectance: 0.51



LINEN - 722
Light reflectance: 0.29



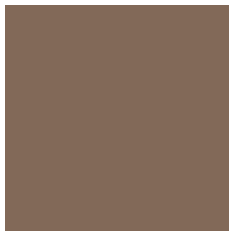
HEMP - 723
Light reflectance: 0.45



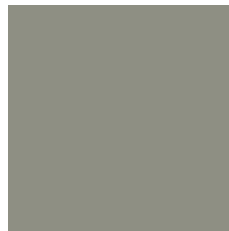
CORK - 724
Light reflectance: 0.30



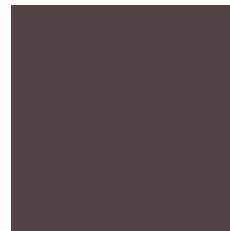
EARTH - 725
Light reflectance: 0.22



CLAY - 726
Light reflectance: 0.22



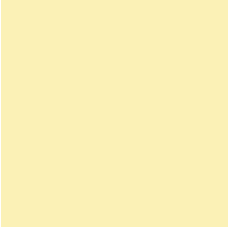
HUMUS - 727
Light reflectance: 0.05



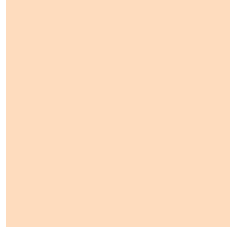
The actual color of the ceiling tiles may deviate slightly from printed colors due to the texture of the surface and the underlying color of stone wool. Samples of the colored surfaces are available upon request.

Sensorial TONES

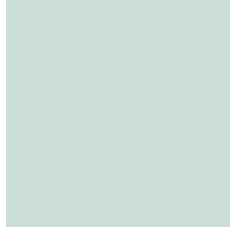
LIGHT - 740
Light reflectance: 0.71



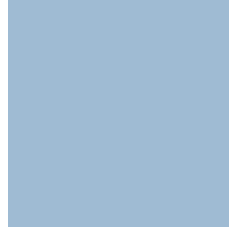
SUNRISE - 741
Light reflectance: 0.65



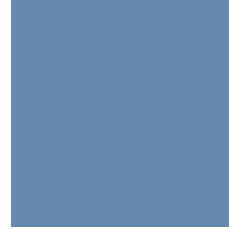
FRESH - 742
Light reflectance: 0.51



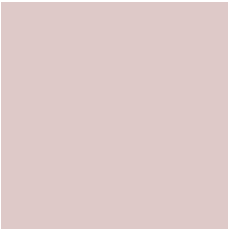
BREEZE - 743
Light reflectance: 0.45



AQUA - 744
Light reflectance: 0.25



MISTY - 745
Light reflectance: 0.60



TWILIGHT - 746
Light reflectance: 0.29



energetic tones

CHILI - 750
Light reflectance: 0.12



CURACAO - 751
Light reflectance: 0.22



VITAMIN - 752
Light reflectance: 0.46



PRECIOUS TONES

COPPER - 760
Light reflectance: 0.34



GOLD - 761
Light reflectance: 0.41

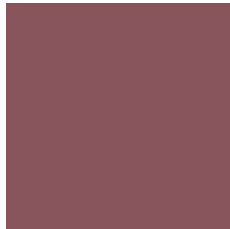


MERCURY - 762
Light reflectance: 0.44



Sophisticated tones

GARNET - 770
Light reflectance: 0.12



SCARLET - 771
Light reflectance: 0.08



ERMINE - 772
Light reflectance: 0.12



EMERALD - 773
Light reflectance: 0.07





ROCKFON® Cinema Black™

FEATURES & BENEFITS:

- Factory painted glass scrim
- Good sound absorption (NRC = 0.85 - 0.95)
- High fire performance
- Lightweight panel, easy to carry and install
- Available in square lay-in

APPLICATIONS:

- Theatres
- Auditoriums
- Restaurants




ROCKFON® Cinema Black™

 RECYCLED CONTENT: up to 43%

BUDGET:
\$\$\$\$\$



Edge designation	Item number	Modular size	lbs/sqft	sqft/carton	NRC	CAC	AC	Fire Class	Light Reflectance	Thermal Insulation	
										R Value (BTU Units)	RSI Value (Watts Units)
	SQ	1200	2' x 2' x 5/8"	0.38	112	0.85	-	A	0.04	2.2	0.39
	SQ	1201	2' x 4' x 5/8"	0.38	112	0.85	-	A	0.04	2.2	0.39
	SQ	1210	2' x 2' x 1"	0.45	64	0.95	-	A	0.04	3.5	0.62
	SQ	1211	2' x 4' x 1"	0.45	64	0.95	-	A	0.04	3.5	0.62

MATERIAL:

Stone wool (Mineral Wool) ceiling tiles

SURFACE FINISH:

Factory painted glass scrim

FIRE PERFORMANCE:

Surface burning characteristics: UL723 (ASTM E84) Flame Spread Index 5, Smoke developed Index 0 (UL Labeled). CAN/ULC S102 Flame Spread Index 15, Smoke developed Index 5.

ASTM E1264 CLASSIFICATION:

Type XX - Stone wool base with membrane-faced overlay, Pattern G

SAG RESISTANCE:

ROCKFON ceiling tiles are dimensionally stable even at high humidity levels of up to 100% relative humidity and can be installed at all temperatures ranging from 32 °F to 104 °F. No acclimatization is needed. ROCKFON ceiling tiles can be installed during the very early stage of the build (when windows are not fully

sealed) without any risk of deflection of the tiles. The low weight, stability and nonhygroscopic character of ROCKFON tiles will limit the weight of the fully installed ceiling whilst retaining its declared properties even when applied in infrequently heated and unheated rooms without condensation.

VOC/FORMALDEHYDE EMISSIONS:

The product fulfils requirements for low emitting acoustic ceiling tiles and meets the California Department of Health Services Standard Method V1.1 (February 2012) "Standard method for the Testing and Evaluation of Volatile Organic Chemical Emissions from Indoor Sources Using Environmental Chambers (Section 01350)." Selected potential applications: LEED, CHPS and CALGreen. All ROCKFON stone wool acoustic ceiling solutions are GREENGUARD Gold certified to GREENGUARD standards for low chemical emissions into indoor air during product usage.

HYGIENIC PROPERTIES:

ROCKFON ceiling tiles are made of water repellent stone wool. Stone wool has no nutritional value and therefore it provides no sustenance to harmful micro-organisms.

CLEANING PROPERTIES:

The surface can be vacuum-cleaned with a soft brush attachment.

WARRANTY INFORMATION:

30-Year Limited Product Warranty. See www.rockfon.com

SUSTAINABILITY:

ROCKFON stone wool ceiling tiles are primarily made from abundantly available basalt rock and contain up to 42% recycled materials. ROCKFON products supplied in North America are produced in ISO9001/ISO14001 certified factories.



ROCKFON® Pacific™

FEATURES & BENEFITS:




- Smooth white surface
- Economic solution with basic sound absorption (NRC = 0.60)
- High fire performance
- Lightweight panel, easy to carry and install
- Available in square lay-in

APPLICATIONS:

- Basic areas (low budget)





Edge designation	Item number	Modular size	lbs/sqft	sqft/carton	NRC	CAC	AC	Fire Class	Light Reflectance	Thermal Insulation	
										R Value (BTU Units)	RSI Value (Watts Units)
	SQ 200	2' x 2' x 1/2"	0.33	128	0.60	-	-	A	0.85	1.8	0.31
	SQ 201	2' x 4' x 1/2"	0.33	128	0.60	-	-	A	0.85	1.8	0.31
	SLN 220	2' x 2' x 1/2"	0.33	64	0.60	-	-	A	0.85	1.8	0.31
	SLN 221	2' x 4' x 1/2"	0.33	128	0.60	-	-	A	0.85	1.8	0.31
	SL 260	2' x 2' x 1/2"	0.33	64	0.60	-	-	A	0.85	1.8	0.31
	SL 261	2' x 4' x 1/2"	0.33	128	0.60	-	-	A	0.85	1.8	0.31

MATERIAL:

Stone wool (Mineral Wool) ceiling tiles

SURFACE FINISH:

Factory painted glass scrim

FIRE PERFORMANCE:

Surface burning characteristics: UL723 (ASTM E84) Flame Spread Index 0, Smoke developed Index 5 (UL Labeled). CAN/ULC S102 Flame Spread Index 5, Smoke developed Index 0.

ASTM E1264 CLASSIFICATION:

Type XX - Stone wool base with membrane-faced overlay, Pattern G

SAG RESISTANCE:

ROCKFON ceiling tiles are dimensionally stable even at high humidity levels of up to 100% relative humidity and can be installed at all temperatures ranging from 32 °F to 104 °F. No acclimatization is needed. ROCKFON ceiling tiles can be installed during the very early stage of

the build (when windows are not fully sealed) without any risk of deflection of the tiles. The low weight, stability and nonhygroscopic character of ROCKFON tiles will limit the weight of the fully installed ceiling whilst retaining its declared properties even when applied in infrequently heated and unheated rooms without condensation.

VOC/FORMALDEHYDE EMISSIONS:

The product fulfils requirements for low emitting acoustic ceiling tiles and meets the California Department of Health Services Standard Method V1.1 (February 2012) "Standard method for the Testing and Evaluation of Volatile Organic Chemical Emissions from Indoor Sources Using Environmental Chambers (Section 01350)." Selected potential applications: LEED, CHPS and CALGreen. All ROCKFON stone wool acoustic ceiling solutions are GREENGUARD Gold certified to GREENGUARD standards for low chemical emissions into indoor air during product usage.

HYGIENIC PROPERTIES:

ROCKFON ceiling tiles are made of water repellent stone wool. Stone wool has no nutritional value and therefore it provides no sustenance to harmful micro-organisms.

CLEANING PROPERTIES:

The surface can be vacuum-cleaned with a soft brush attachment.

WARRANTY INFORMATION:

30-Year Limited Product Warranty. See www.rockfon.com

SUSTAINABILITY:

ROCKFON stone wool ceiling tiles are primarily made from abundantly available basalt rock and contain up to 42% recycled materials. ROCKFON products supplied in North America are produced in ISO9001/ISO14001 certified factories.



ROCKFON Artic®

FEATURES & BENEFITS:




- Smooth white surface
- Economic solution with standard sound absorption (NRC = 0.75)
- High fire performance
- Lightweight panel, easy to carry and install
- Available in square lay-in and tegular

APPLICATIONS:

- Basic areas (low to medium budget)
- Sanitary





Edge designation	Item number	Modular size	lbs/sqft	sqft/carton	NRC	CAC	AC	Fire Class	Light Reflectance	Thermal Insulation	
										R Value (BTU Units)	RSI Value (Watts Units)
	SQ 600	2' x 2' x 5/8"	0.38	112	0.75	23	-	A	0.85	2.2	0.39
	SQ 601	2' x 4' x 5/8"	0.38	112	0.75	23	-	A	0.85	2.2	0.39
	SQ 609	20" x 60" x 3/4"	0.45	83.33	0.75	23	-	A	0.85	2.6	0.46
	SQ 610	2' x 5' x 3/4"	0.45	100	0.75	23	-	A	0.85	2.6	0.46
	SLN 620	2' x 2' x 5/8"	0.47	56	0.75	23	-	A	0.85	2.2	0.39
	SLN 621	2' x 4' x 5/8"	0.47	112	0.75	23	-	A	0.85	2.2	0.39
	SL 660	2' x 2' x 5/8"	0.47	56	0.75	23	-	A	0.85	2.2	0.39
	SL 661	2' x 4' x 5/8"	0.47	112	0.75	23	-	A	0.85	2.2	0.39

MATERIAL:

Stone wool (Mineral Wool) ceiling tiles

SURFACE FINISH:

Factory painted glass scrim

FIRE PERFORMANCE:

Surface burning characteristics: UL723 (ASTM E84) Flame Spread Index 0, Smoke developed Index 5 (UL Labeled). CAN/ULC S102 Flame Spread Index 5, Smoke developed Index 0.

ASTM E1264 CLASSIFICATION:

Type XX - Stone wool base with membrane-faced overlay, Pattern G

SAG RESISTANCE:

ROCKFON ceiling tiles are dimensionally stable even at high humidity levels of up to 100% relative humidity and can be installed at all temperatures ranging from 32 °F to 104 °F. No acclimatization is needed. ROCKFON ceiling tiles can be installed during the very early stage of the build (when windows are

not fully sealed) without any risk of deflection of the tiles. The low weight, stability and nonhygroscopic character of ROCKFON tiles will limit the weight of the fully installed ceiling whilst retaining its declared properties even when applied in infrequently heated and unheated rooms without condensation.

VOC/FORMALDEHYDE EMISSIONS:

The product fulfils requirements for low emitting acoustic ceiling tiles and meets the California Department of Health Services Standard Method V1.1 (February 2012) "Standard method for the Testing and Evaluation of Volatile Organic Chemical Emissions from Indoor Sources Using Environmental Chambers (Section 01350)." Selected potential applications: LEED, CHPS and CALGreen. All ROCKFON stone wool acoustic ceiling solutions are GREENGUARD Gold certified to GREENGUARD standards for low chemical emissions into indoor air during product usage.

HYGIENIC PROPERTIES:

ROCKFON ceiling tiles are made of water repellent stone wool. Stone wool has no nutritional value and therefore it provides no sustenance to harmful micro-organisms.

CLEANING PROPERTIES:

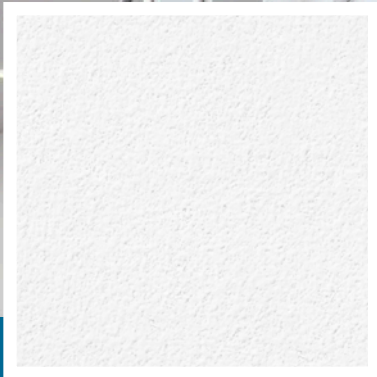
The surface can be vacuum-cleaned with a soft brush attachment.

WARRANTY INFORMATION:

30-Year Limited Product Warranty. See www.rockfon.com

SUSTAINABILITY:

ROCKFON stone wool ceiling tiles are primarily made from abundantly available basalt rock and contain up to 42% recycled materials. ROCKFON products supplied in North America are produced in ISO9001/ISO14001 certified factories.



ROCKFON Koral®

FEATURES & BENEFITS:

- Lightly-textured white surface
- Good sound absorption (NRC = 0.85)
- High fire performance
- High light reflectance (LR = 0.86)
- Available in square lay-in and tegular

APPLICATIONS:

- Open-plan Offices
- Classrooms
- Retail/shops
- Kitchens
- Food preparation
- Sanitary areas (bath, shower rooms)
- Industrial areas
- Corridors





Edge designation	Item number	Modular size	lbs/sqft	sqft/carton	NRC	CAC	AC	Fire Class	Light Reflectance	Thermal Insulation	
										R Value (BTU Units)	RSI Value (Watts Units)
	SQ 1100	2' x 2' x 5/8"	0.38	112	0.85	22	170	A	0.86	2.2	0.39
	SQ 1101	2' x 4' x 5/8"	0.38	112	0.85	22	170	A	0.86	2.2	0.39
	SLN 1120	2' x 2' x 5/8"	0.47	56	0.85	22	170	A	0.86	2.2	0.39
	SLN 1121	2' x 4' x 5/8"	0.47	112	0.85	22	170	A	0.86	2.2	0.39
	SL 1160	2' x 2' x 5/8"	0.47	56	0.85	22	170	A	0.86	2.2	0.39
	SL 1161	2' x 4' x 5/8"	0.47	112	0.85	22	170	A	0.86	2.2	0.39

MATERIAL:

Stone wool (Mineral Wool) ceiling tiles

SURFACE FINISH:

Factory painted glass scrim

FIRE PERFORMANCE:

Surface burning characteristics: UL723 (ASTM E84) Flame Spread Index 0, Smoke developed Index 5 (UL Labeled). CAN/ULC S102 Flame Spread Index 5, Smoke developed Index 0.

ASTM E1264 CLASSIFICATION:

Type XX - Stone wool base with membrane-faced overlay, Pattern E

SAG RESISTANCE:

ROCKFON ceiling tiles are dimensionally stable even at high humidity levels of up to 100% relative humidity and can be installed at all temperatures ranging from 32 °F to 104 °F. No acclimatization is needed. ROCKFON ceiling tiles can be installed during the very early stage of the build (when windows are not fully sealed) without any risk of deflection of the tiles. The low weight, stability and nonhygroscopic character of ROCKFON tiles will limit the weight

of the fully installed ceiling whilst retaining its declared properties even when applied in infrequently heated and unheated rooms without condensation.

VOC/FORMALDEHYDE EMISSIONS:

The product fulfils requirements for low emitting acoustic ceiling tiles and meets the California Department of Health Services Standard Method V1.1 (February 2012) "Standard method for the Testing and Evaluation of Volatile Organic Chemical Emissions from Indoor Sources Using Environmental Chambers (Section 01350)." Selected potential applications: LEED, CHPS and CALGreen. All ROCKFON stone wool acoustic ceiling solutions are GREENGUARD Gold certified to GREENGUARD standards for low chemical emissions into indoor air during product usage.

HYGIENIC PROPERTIES:

ROCKFON ceiling tiles are made of water repellent stone wool. Stone wool has no nutritional value and therefore it provides no sustenance to harmful micro-organisms.

CLEANING PROPERTIES:

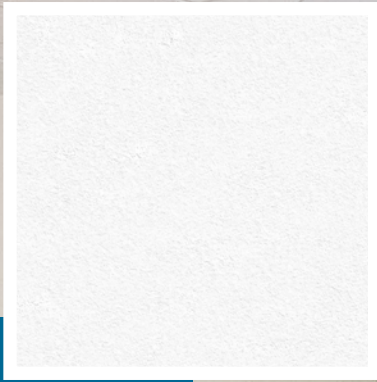
The surface can be vacuum cleaned with a soft brush attachment. It can also be cleaned using a damp cloth with cold or warm water (max. 104 °F) with a slightly alkaline detergent (pH between 7 and 9) without alcohol, ammonia or chlorine. Cleaning with a sponge or damp cloth may render the surface slightly shinier and we therefore recommend cleaning the whole surface evenly for best results.

WARRANTY INFORMATION:

30-Year Limited Product Warranty. See www.rockfon.com

SUSTAINABILITY:

ROCKFON stone wool ceiling tiles are primarily made from abundantly available basalt rock and contain up to 42% recycled materials. ROCKFON products supplied in North America are produced in ISO9001/ISO14001 certified factories.



ROCKFON® Tropic™

FEATURES & BENEFITS:

- Smooth white surface
- Good sound absorption (NRC = 0.85)
- High fire performance
- High light reflectance (LR = 0.86)
- Available in square lay-in and tegular

APPLICATIONS:

- Open plan offices
- Single offices
- Classrooms
- Retail/shops





Edge designation	Item number	Modular size	lbs/sqft	sqft/carton	NRC	CAC	AC	Fire Class	Light Reflectance	Thermal Insulation		
										R Value (BTU Units)	RSI Value (Watts Units)	
	SQ	1000	2' x 2' x 5/8"	0.38	112	0.85	22	-	A	0.86	2.2	0.39
	SQ	1001	2' x 4' x 5/8"	0.38	112	0.85	22	-	A	0.86	2.2	0.39
	SQ	1009	20" x 60" x 3/4"	0.45	83.33	0.90	22	180	A	0.86	2.6	0.46
	SLN	1020	2' x 2' x 5/8"	0.47	56	0.85	22	-	A	0.86	2.2	0.39
	SLN	1021	2' x 4' x 5/8"	0.47	112	0.85	22	-	A	0.86	2.2	0.39
	SL	1060	2' x 2' x 5/8"	0.47	56	0.85	22	-	A	0.86	2.2	0.39
	SL	1061	2' x 4' x 5/8"	0.47	112	0.85	22	-	A	0.86	2.2	0.39

MATERIAL:

Stone wool (Mineral Wool) ceiling tiles

SURFACE FINISH:

Factory painted glass scrim

FIRE PERFORMANCE:

Surface burning characteristics: UL723 (ASTM E84) Flame Spread Index 0, Smoke developed Index 5 (UL Labeled). CAN/ULC S102 Flame Spread Index 5, Smoke developed Index 0.

ASTM E1264 CLASSIFICATION:

Type XX - Stone wool base with membrane-faced overlay, Pattern G

SAG RESISTANCE:

ROCKFON ceiling tiles are dimensionally stable even at high humidity levels of up to 100% relative humidity and can be installed at all temperatures ranging from 32 °F to 104 °F. No acclimatization is needed. ROCKFON ceiling tiles can be installed during the very early stage of the build (when windows are not fully sealed)

without any risk of deflection of the tiles. The low weight, stability and nonhygroscopic character of ROCKFON tiles will limit the weight of the fully installed ceiling whilst retaining its declared properties even when applied in infrequently heated and unheated rooms without condensation.

VOC/FORMALDEHYDE EMISSIONS:

The product fulfils requirements for low emitting acoustic ceiling tiles and meets the California Department of Health Services Standard Method V1.1 (February 2012) "Standard method for the Testing and Evaluation of Volatile Organic Chemical Emissions from Indoor Sources Using Environmental Chambers (Section 01350)." Selected potential applications: LEED, CHPS and CALGreen. All ROCKFON stone wool acoustic ceiling solutions are GREENGUARD Gold certified to GREENGUARD standards for low chemical emissions into indoor air during product usage.

HYGIENIC PROPERTIES:

ROCKFON ceiling tiles are made of water repellent stone wool. Stone wool has no nutritional value and therefore it provides no sustenance to harmful micro-organisms.

CLEANING PROPERTIES:

The surface can be vacuum-cleaned with a soft brush attachment.

WARRANTY INFORMATION:

30-Year Limited Product Warranty. See www.rockfon.com

SUSTAINABILITY:

ROCKFON stone wool ceiling tiles are primarily made from abundantly available basalt rock and contain up to 42% recycled materials. ROCKFON products supplied in North America are produced in ISO9001/ISO14001 certified factories.



ROCKFON® Medical Standard™

FEATURES & BENEFITS:

- Fulfills all basic cleaning and hygienic properties for use in health care
- Does not contribute to the growth of MRSA
- Has a low particle emission (ISO Class 5, ISO14644-1) for better air cleanliness
- Excellent sound absorption (NRC = 0.90)
- High fire performance
- High light reflectance (LR = 0.86)
- Available in square lay-in and square tegular

APPLICATIONS:

- Administration (health care)
- Waiting areas (health care)
- Nursing offices
- Corridors (health care)





Edge designation	Item number	Modular size	lbs/sqft	sqft/carton	NRC	CAC	AC	Fire Class	Light Reflectance	Thermal Insulation	
										R Value (BTU Units)	RSI Value (Watts Units)
	SQ 33200	2' x 2' x 5/8"	0.38	112	0.90	22	170	A	0.86	2.2	0.39
	SQ 33201	2' x 4' x 5/8"	0.38	112	0.90	22	170	A	0.86	2.2	0.39
	SLN 33225	2' x 2' x 5/8"	0.47	56	0.90	22	170	A	0.86	2.2	0.39
	SLN 33226	2' x 4' x 5/8"	0.47	112	0.90	22	170	A	0.86	2.2	0.39
	SL 33250	2' x 2' x 5/8"	0.47	56	0.90	22	170	A	0.86	2.2	0.39
	SL 33251	2' x 4' x 5/8"	0.47	112	0.90	22	170	A	0.86	2.2	0.39

MATERIAL:

Stone wool (Mineral Wool) ceiling tiles.

SURFACE FINISH:

Factory painted glass scrim

FIRE PERFORMANCE:

Surface burning characteristics: UL723 (ASTM E84). Flame Spread Index 0, Smoke developed Index 0. CAN/ULCS102 Flame Spread Index 10, Smoke developed Index 5.

ASTM E1264 CLASSIFICATION:

Type XX - Stone wool base with membrane-faced overlay, Pattern E

SAG RESISTANCE:

ROCKFON ceiling tiles are dimensionally stable even at high humidity levels of up to 100% relative humidity and can be installed at all temperatures ranging from 32 °F to 104 °F. No acclimatization is needed. ROCKFON ceiling tiles can be installed during the very early stage of the build (when windows are not fully sealed) without any risk of deflection of the tiles. The low weight, stability and non-hygroscopic character of ROCKFON tiles will limit the weight of the fully installed ceiling whilst retaining its declared properties even when applied in infrequently heated and unheated rooms without condensation.

VOC/FORMALDEHYDE EMISSIONS:

The product fulfils requirements for low emitting acoustic ceiling tiles and meets the California Department of Health Services Standard Method V1.1 (February 2012) "Standard method for the Testing and Evaluation of Volatile Organic Chemical Emissions from Indoor Sources Using Environmental Chambers (Section 01350)." Selected potential applications: LEED, CHPS and CALGreen. All ROCKFON stone wool acoustic ceiling solutions are GREENGUARD Gold certified to GREENGUARD standards for low chemical emissions into indoor air during product usage.

HYGIENIC PROPERTIES:

ROCKFON ceiling tiles are made of water repellent stone wool. Stone wool has no nutritional value and therefore it provides no sustenance to harmful micro-organisms.

ROCKFON Medical Standard has been tested with the following micro-organisms and has obtained the bacteriological class B5 and B10 (NF S 90-351):

- Methicillin Resistant Staphylococcus Aureus (MRSA): bacteria resistant against antibiotics and responsible for post-surgery infections and septicaemias
- Candida Albicans: yeast responsible for skin infections and pneumonias
- Aspergillus Niger: mould responsible for pneumonias

CLEAN ROOM CLASSIFICATION:

Particles emitted by building materials can increase the risk of infection spreading in health care buildings. Due to its low particle emission, ROCKFON Medical Standard meets stringent requirements for air cleanliness. ROCKFON Medical Standard is classified ISO Class 5 in accordance with ISO14644-1.

CLEANING PROPERTIES:

The surface can be vacuum cleaned with a soft brush attachment. It can also be cleaned using a damp cloth with cold or warm water (max. 104 °F) with a slightly alkaline detergent (pH between 7 and 9) without alcohol, ammonia or chlorine. Cleaning with a sponge or damp cloth may render the surface slightly shinier and we therefore recommend cleaning the whole surface evenly for best results.

WARRANTY INFORMATION:

30-Year Limited Product Warranty. See www.rockfon.com

SUSTAINABILITY:

ROCKFON stone wool ceiling tiles are primarily made from abundantly available basalt rock and contain up to 42% recycled materials. ROCKFON products supplied in North America are produced in ISO9001/ISO14001 certified factories.



ROCKFON® Medical Plus™

FEATURES & BENEFITS:

- Can be cleaned with diluted solutions of ammonia, chlorine, quaternary ammonium and hydrogen peroxide
- Can be cleaned and disinfected effectively by steam cleaning
- Does not contribute to the growth of MRSA
- Has a low particle emission (ISO Class 4, ISO14644-1) for better air cleanliness
- The rear side of the panel is covered by a back fleece. The edges are sealed.
- Excellent sound absorption (NRC = 0.90)
- Optimal design freedom due to a large selection of edges (lay-in, tegular and concealed)

APPLICATIONS:

- Emergency and treatment rooms
- Patient rooms
- Delivery rooms
- Small surgery
- Radiology
- Laboratories





Edge designation	Item number	Modular size	lbs/sqft	sqft/carton	NRC	CAC	AC	Fire Class	Light Reflectance	Thermal Insulation	
										R Value (BTU Units)	RSI Value (Watts Units)
	SQ 34100	2' x 2' x 3/4"	0.45	80	0.90	22	-	A	0.83	2.6	0.46
	SQ 34101	2' x 4' x 3/4"	0.45	80	0.90	22	-	A	0.83	2.6	0.46
	SLN 34200	2' x 2' x 3/4"	0.57	40	0.90	22	-	A	0.83	2.6	0.46
	SLN 34201	2' x 4' x 3/4"	0.57	80	0.90	22	-	A	0.83	2.6	0.46
	SL 34250	2' x 2' x 3/4"	0.57	40	0.90	22	-	A	0.83	2.6	0.46
	SL 34251	2' x 4' x 3/4"	0.57	80	0.90	22	-	A	0.83	2.6	0.46
	CDX 34600	2' x 2' x 7/8"	0.75	40	0.90	22	-	A	0.83	3.1	0.54

MATERIAL:

Stone wool (Mineral Wool) ceiling tiles.

SURFACE FINISH:

Factory painted glass scrim

FIRE PERFORMANCE:

Surface burning characteristics: UL723 (ASTM E84). Flame Spread Index 0, Smoke developed Index 5. CAN/ULCS102 Flame Spread Index 5, Smoke developed Index 0.

ASTM E1264 CLASSIFICATION:

Type XX - Stone wool base with membrane-faced overlay, Pattern E

SAG RESISTANCE:

ROCKFON ceiling tiles are dimensionally stable even at high humidity levels of up to 100% relative humidity and can be installed at all temperatures ranging from 32 °F to 104 °F. No acclimatization is needed. ROCKFON ceiling tiles can be installed during the very early stage of the build (when windows are not fully sealed) without any risk of deflection of the tiles. The low weight, stability and non-hygroscopic character of ROCKFON tiles will limit the weight of the fully installed ceiling whilst retaining its declared properties even when applied in infrequently heated and unheated rooms without condensation.

VOC/FORMALDEHYDE EMISSIONS:

The product fulfils requirements for low emitting acoustic ceiling tiles and meets the California Department of Health Services Standard Method V1.1 (February 2012) "Standard method for the Testing and Evaluation of Volatile Organic Chemical Emissions from Indoor Sources Using Environmental Chambers (Section 01350)." Selected potential applications: LEED, CHPS and CALGreen. All ROCKFON stone wool

acoustic ceiling solutions are GREENGUARD Gold certified to GREENGUARD standards for low chemical emissions into indoor air during product usage.

HYGIENIC PROPERTIES:

ROCKFON ceiling tiles are made of water repellent stone wool. Stone wool has no nutritional value and therefore it provides no sustenance to the following micro-organisms tested in accordance with JIS Z 2801:2000 and ASTM C 1338-96:

- Eschericia coli
- Stachybotrys chartarum
- Staphylococcus aureus
- Penicillium brevicompactum
- Alternaria tenuissima
- Aspergillus niger
- Sporobolomyces roseum
- Rhodotorula rubra
- Methicillin-resistant staphylococcus aureus (MRSA)

ROCKFON Medical Plus has been tested with the following micro-organisms and has obtained the bacteriological class B1 (NF S 90-351, best class):

- Methicillin Resistant Staphylococcus Aureus (MRSA): bacteria resistant against antibiotics and responsible for post-surgery infections and septicaemias
- Candida Albicans: yeast responsible for skin infections and pneumonias
- Aspergillus Niger: mould responsible for pneumonias

ROCKFON Medical Plus can be effectively disinfected by steam cleaning. The bactericidal and fungicidal effect of steam cleaning on ROCKFON Medical Plus has been tested.

CLEAN ROOM CLASSIFICATION:

Particles emitted by building materials can increase the risk of infection spreading in health care buildings. Due to its low particle emission, ROCKFON Medical Plus meets stringent requirements for air cleanliness. ROCKFON Medical Plus is classified ISO Class 4 in accordance with ISO14644-1.

CLEANING PROPERTIES:

The surface of ROCKFON Medical Plus has enhanced resistance and is highly water-repellent. It is treated to minimize dirt pick-up and finger marking – this being essential for ease of installation and frequent demounting for access to services.

The surface can be vacuum-cleaned with a soft brush attachment and it resists diluted solutions of the following: ammonia, chlorine, quaternary ammonium and hydrogen peroxide. Cleaning with a sponge or damp cloth may render the surface slightly shinier and we therefore recommend cleaning the whole surface evenly for best results.

ROCKFON Medical Plus can also be cleaned and disinfected twice a year by steam cleaning following a protocol defined by experts and using an adapted surface mop.

WARRANTY INFORMATION:

30-Year Limited Product Warranty. See www.rockfon.com

SUSTAINABILITY:

ROCKFON stone wool ceiling tiles are primarily made from abundantly available basalt rock and contain up to 42% recycled materials. ROCKFON products supplied in North America are produced in ISO9001/ISO14001 certified factories.



ROCKFON® Medical Air™

FEATURES & BENEFITS:

- Can be used in areas where differential pressure is required to prevent infections spreading
- Can be cleaned with diluted solutions of ammonia, chlorine, quaternary ammonium and hydrogen peroxide
- Can be cleaned and disinfected effectively by steam cleaning
- Does not contribute to the growth of MRSA
- Has a low particle emission (ISO Class 3, ISO14644-1) for better air cleanliness
- The rear side of the panel is covered by an airtight high performance membrane. The edges are sealed.
- Excellent sound absorption (NRC = 0.85)

APPLICATIONS:

- Operation rooms
- Recovery rooms
- Intensive care





Edge designation	Item number	Modular size	lbs/sqft	sqft/carton	NRC	CAC	AC	Fire Class	Light Reflectance	Thermal Insulation	
										R Value (BTU Units)	RSI Value (Watts Units)
	SQ 35100	2' x 2' x 1"	0.54	64	0.85	22	-	A	0.83	3.5	0.62
	SQ 35101	2' x 4' x 1"	0.54	64	0.85	22	-	A	0.83	3.5	0.62

MATERIAL:

Stone wool (Mineral Wool) ceiling tiles.

SURFACE FINISH:

Factory painted glass scrim

FIRE PERFORMANCE:

Surface burning characteristics: UL723 (ASTM E84). Flame Spread Index 5, Smoke developed Index 5. CAN/ULCS102 Flame Spread Index 15, Smoke developed Index 5.

ASTM E1264 CLASSIFICATION:

Type XX - Stone wool base with membrane-faced overlay, Pattern E

SAG RESISTANCE:

ROCKFON ceiling tiles are dimensionally stable even at high humidity levels of up to 100% relative humidity and can be installed at all temperatures ranging from 32 °F to 104 °F. No acclimatization is needed. ROCKFON ceiling tiles can be installed during the very early stage of the build (when windows are not fully sealed) without any risk of deflection of the tiles. The low weight, stability and nonhygroscopic character of ROCKFON tiles will limit the weight of the fully installed ceiling whilst retaining its declared properties even when applied in infrequently heated and unheated rooms without condensation.

VOC/FORMALDEHYDE EMISSIONS:

The product fulfils requirements for low emitting acoustic ceiling tiles and meets the California Department of Health Services Standard Method V1.1 (February 2012) "Standard method for the Testing and Evaluation of Volatile Organic Chemical Emissions from Indoor Sources Using Environmental Chambers (Section 01350)." Selected potential applications: LEED, CHPS and CALGreen. All ROCKFON stone wool acoustic ceiling solutions are GREENGUARD Gold certified to GREENGUARD standards for low chemical emissions into indoor air during product usage.

HYGIENIC PROPERTIES:

ROCKFON ceiling tiles are made of water repellent stone wool. Stone wool has no nutritional value and therefore it provides no sustenance to the following micro-organisms tested in accordance with JIS Z 2801:2000 and ASTM C 1338-96:

- Eschericia coli
- Stachybotrys chartarum
- Staphylococcus aureus
- Penicillium brevicompactum
- Alternaria tenuissima
- Aspergillus niger
- Sporobolomyces roseum
- Rhodotorula rubra
- Methicillin-resistant staphylococcus aureus (MRSA)

ROCKFON Medical Air has been tested with the following micro-organisms and has obtained the bacteriological class B1 and B5 (NF S 90-351, B1 is best in class):

- Methicillin Resistant Staphylococcus Aureus (MRSA): bacteria resistant against antibiotics and responsible for post-surgery infections and septicaemias
- Candida Albicans: yeast responsible for skin infections and pneumonias
- Aspergillus Niger: mould responsible for pneumonias

ROCKFON Medical Air can be effectively disinfected by steam cleaning. The bactericidal and fungicidal effect of steam cleaning on ROCKFON Medical Air has been tested.

CLEAN ROOM CLASSIFICATION:

Particles emitted by building materials can increase the risk of infection spreading in health care buildings. Due to its low particle emission, ROCKFON Medical Air meets stringent requirements for air cleanliness. ROCKFON Medical Air is classified ISO Class 3 in accordance with ISO14644-1.

CLEANING PROPERTIES:

The surface of ROCKFON Medical Air has enhanced resistance and is highly water-repellent. It is treated to minimize dirt pick-up and finger marking – this being essential for ease of installation and frequent demounting for access to services.

The surface can be vacuum-cleaned with a soft brush attachment and it resists diluted solutions of the following: ammonia, chlorine, quaternary ammonium and hydrogen peroxide. Cleaning with a sponge or damp cloth may render the surface slightly shinier and we therefore recommend cleaning the whole surface evenly for best results.

ROCKFON Medical Air can also be cleaned and disinfected twice a year by steam cleaning following a protocol defined by experts and using an adapted surface mop.

AIR PRESSURE CONTROL:

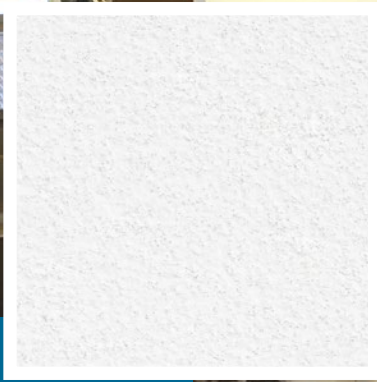
ROCKFON Medical Air can be used in areas where differential pressure is required to prevent infections spreading. Due to its airtight high performance membrane on the back and its sealed edges, ROCKFON Medical Air, in combination with clips (2 clips per sqft), provides the airtightness needed to maintain air pressure at a given level. ROCKFON Medical Air has been tested under a pressure range of 5 to 40 Pa and achieved an air leakage rate of less than 0.5 m³/h/m²/Pa. ROCKFON recommends the addition of closed cell neoprene foam tape on the grid system to improve performance in areas where air pressure requirements are more stringent. For more details, please contact ROCKFON.

WARRANTY INFORMATION:

30-Year Limited Product Warranty. See www.rockfon.com

SUSTAINABILITY:

ROCKFON stone wool ceiling tiles are primarily made from abundantly available basalt rock and contain up to 42% recycled materials. ROCKFON products supplied in North America are produced in ISO9001/ISO14001 certified factories.



ROCKFON® Hygienic Plus™

FEATURES & BENEFITS:

- High performance tiles are suitable for clean room type environments
- Does not contribute to the growth of MRSA
- Has a low particle emission (ISO Class 5, ISO14644-1) for better air cleanliness
- The rear side of the panel is covered by a back fleece. The edges are sealed.
- Excellent sound absorption (NRC = 0.90)
- High fire performance
- High light reflectance (LR = 0.83)
- Available in square lay in

APPLICATIONS:

- Sanitary Areas (baths, showers, washrooms)
- Restaurants and Cafeterias
- Kitchen and Food Preparation Areas
- Locker Rooms
- Laboratories and Clean Rooms



ROCKFON® Hygienic Plus™



RECYCLED CONTENT: up to 38%

BUDGET:
\$\$\$\$\$



Edge designation	Item number	Modular size	lbs/sqft	sqft/carton	NRC	CAC	AC	Fire Class	Light Reflectance	Thermal Insulation		
										R Value (BTU Units)	RSI Value (Watts Units)	
	SQ	31100	2' x 2' x 3/4"	0.45	80	0.90	22	-	A	0.83	2.6	0.46
	SQ	31101	2' x 4' x 3/4"	0.45	80	0.90	22	-	A	0.83	2.6	0.46

MATERIAL:

Stone wool (Mineral Wool) ceiling tiles

SURFACE FINISH:

Factory painted glass scrim

FIRE PERFORMANCE:

Surface burning characteristics: UL723 (ASTM E84) Flame Spread Index 0, Smoke developed Index 5. CAN/ULC S102 Flame Spread Index 5, Smoke developed Index 0.

ASTM E1264 CLASSIFICATION:

Type XX - Stone wool base with membrane-faced overlay, Pattern E

SAG RESISTANCE:

ROCKFON ceiling tiles are dimensionally stable even at high humidity levels of up to 100% relative humidity and can be installed at all temperatures ranging from 32 °F to 104 °F. No acclimatization is needed. ROCKFON ceiling tiles can be installed during the very early stage of the build (when windows are not fully sealed) without any risk of deflection of the tiles. The low weight, stability and non-hygroscopic character of ROCKFON tiles will limit the weight of the fully installed ceiling whilst retaining its declared properties even when applied in infrequently heated and unheated rooms without condensation.

VOC/FORMALDEHYDE EMISSIONS:

The product fulfils requirements for low emitting acoustic ceiling tiles and meets the California Department of Health Services Standard Method V1.1 (February 2012) "Standard method for the Testing and Evaluation of Volatile Organic Chemical Emissions from Indoor Sources Using Environmental Chambers (Section 01350)." Selected potential applications: LEED, CHPS and CALGreen. All ROCKFON stone wool acoustic ceiling solutions are GREENGUARD

Gold certified to GREENGUARD standards for low chemical emissions into indoor air during product usage.

HYGIENIC PROPERTIES:

ROCKFON ceiling tiles are made of water repellent stone wool. Stone wool has no nutritional value and therefore it provides no sustenance to the following micro-organisms tested in accordance with JIS Z 2801:2000 and ASTM C 1338-96:

- Eschericia coli
- Stachybotrys chartarum
- Staphylococcus aureus
- Penicillium brevicompactum
- Alternaria tenuissima
- Aspergillus niger
- Sporobolomyces roseum
- Rhodotorula rubra
- Methicillin-resistant staphylococcus aureus (MRSA)

ROCKFON Hygienic Plus has been tested with the following micro-organisms and has obtained the bacteriological class B1 (NF S 90-351, best class):

- Methicillin Resistant Staphylococcus Aureus (MRSA): bacteria resistant against antibiotics and responsible for post-surgery infections and septicaemias
- Candida Albicans: yeast responsible for skin infections and pneumonias
- Aspergillus Niger: mould responsible for pneumonias

ROCKFON Hygienic Plus can be effectively disinfected by steam cleaning. The bactericidal and fungicidal effect of steam cleaning on ROCKFON Hygienic Plus has been tested.

CLEAN ROOM CLASSIFICATION:

Particles emitted by building materials can interfere with manufacturing activities. Due to its low particle emission, ROCKFON Hygienic Plus contribute positively to high level of air cleanliness required in clean room environments. ROCKFON Hygienic Plus is classified ISO Class 5 in accordance with ISO 14644-1.

CLEANING PROPERTIES:

The surface of ROCKFON Hygienic Plus has enhanced resistance and is highly water-repellent. It is treated to minimize dirt pick-up and finger marking – this being essential for ease of installation and frequent demounting for access to services.

The surface can be vacuum-cleaned with a soft brush attachment and it resists diluted solutions of the following: ammonia, chlorine, quaternary ammonium and hydrogen peroxide. Cleaning with a sponge or damp cloth may render the surface slightly shinier and we therefore recommend cleaning the whole surface evenly for best results.

ROCKFON Hygienic Plus can also be cleaned and disinfected twice a year by steam cleaning following a protocol defined by experts and using an adapted surface mop.

WARRANTY INFORMATION:

30-Year Limited Product Warranty. See www.rockfon.com

SUSTAINABILITY:

ROCKFON stone wool ceiling tiles are primarily made from abundantly available basalt rock and contain up to 42% recycled materials. ROCKFON products supplied in North America are produced in ISO9001/ISO14001 certified factories.



ROCKFON® Impact™

FEATURES & BENEFITS:

- A reinforced glass scrim enhancing impact resistance
- Good sound absorption (NRC = 0.85)
- High fire performance
- High light reflectance (LR = 0.86)
- Available in square lay-in

APPLICATIONS:

- Corridors
- Classrooms
- Sports halls
- Multifunctional rooms





Edge designation	Item number	Modular size	lbs/sqft	sqft/carton	NRC	CAC	AC	Fire Class	Light Reflectance	Thermal Insulation	
										R Value (BTU Units)	RSI Value (Watts Units)
	SQ 4100	2' x 2' x 3/4"	0.45	80	0.85	22	-	A	0.86	2.6	0.46
	SQ 4200	2' x 2' x 1-1/2"	0.82	40	0.85	22	-	A	0.86	5.3	0.92

MATERIAL:

Stone wool (Mineral Wool) ceiling tiles.

SURFACE FINISH:

Factory painted reinforced glass scrim to increase impact resistance.

FIRE PERFORMANCE:

Surface burning characteristics: UL723 (ASTM E84). Flame Spread Index 0, Smoke developed Index 5. CAN/ULC S102 Flame Spread Index 5, Smoke developed Index 0.

ASTM E1264 CLASSIFICATION:

Type XX - Stone wool base with membrane-faced overlay, Pattern E

SAG RESISTANCE:

ROCKFON ceiling tiles are dimensionally stable even at high humidity levels of up to 100% relative humidity and can be installed at all temperatures ranging from 32 °F to 104 °F. No acclimatization is needed. ROCKFON ceiling tiles can be installed during the very early stage of the build (when windows are not fully sealed) without any risk of deflection of the tiles. The low weight, stability and non-hygroscopic character of ROCKFON tiles will limit the weight of the fully installed ceiling whilst retaining its declared properties even when applied in infrequently heated and unheated rooms without condensation.

VOC/FORMALDEHYDE EMISSIONS:

The product fulfils requirements for low emitting acoustic ceiling tiles and meets the California Department of Health Services Standard Method V1.1 (February 2012) "Standard method for the Testing and Evaluation of Volatile Organic Chemical Emissions from Indoor Sources Using Environmental Chambers (Section 01350)" Selected potential applications: LEED, CHPS and CALGreen. All ROCKFON stone wool acoustic ceiling solutions are GREENGUARD Gold certified to GREENGUARD standards for low chemical emissions into indoor air during product usage.

HYGIENIC PROPERTIES:

ROCKFON ceiling tiles are made of water repellent stone wool. Stone wool has no nutritional value and therefore it provides no sustenance to harmful micro-organisms.

CLEANING PROPERTIES:

The surface can be vacuum cleaned with a soft brush attachment. It can also be cleaned using a damp cloth with cold or warm water (max. 104 °F) with a slightly alkaline detergent (pH between 7 and 9) without alcohol, ammonia or chlorine. Cleaning with a sponge or damp cloth may render the surface slightly shinier and we therefore recommend cleaning the whole surface evenly for best results.

IMPACT RESISTANCE:

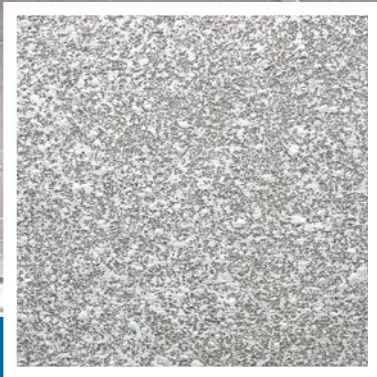
ROCKFON Impact's capability to withstand incidental or occasional ball impact has been tested. For more details, please contact ROCKFON.

WARRANTY INFORMATION:

30-Year Limited Product Warranty. See www.rockfon.com

SUSTAINABILITY:

ROCKFON stone wool ceiling tiles are primarily made from abundantly available basalt rock and contain up to 42% recycled materials. ROCKFON products supplied in North America are produced in ISO9001/ISO14001 certified factories.



ROCKFON® Facett™

FEATURES & BENEFITS:

- For industrial applications and parking garages
- Excellent sound absorption (NRC = 1.00)
- Excellent thermal insulation (up to R=14.0 and RSI=2.47)
- High fire performance
- Available in square lay-in

APPLICATIONS:

- Parking garages
- Stairways
- Industrial applications





Edge designation	Item number	Modular size	lbs/sqft	sqft/carton	NRC	CAC	AC	Fire Class	Light Reflectance	Thermal Insulation	
										R Value (BTU Units)	RSI Value (Watts Units)
	SQ 5100	2' x 4' x 1-1/2"	0.82	40	1.00	22	-	A	0.68	5.3	0.92
	SQ 5200	2' x 4' x 4"	1.93	16	1.00	22	-	A	0.68	14.0	2.47

MATERIAL:

Stone wool (Mineral Wool) ceiling tiles

SURFACE FINISH:

Factory painted glass scrim

FIRE PERFORMANCE:

Surface burning characteristics: UL723 (ASTM E84) Flame Spread Index 0, Smoke developed Index 5 (UL Labeled). CAN/ULC S102 Flame Spread Index 5, Smoke developed Index 0.

ASTM E1264 CLASSIFICATION:

Type XX - Stone wool base with membrane-faced overlay, Pattern E

SAG RESISTANCE:

ROCKFON ceiling tiles are dimensionally stable even at high humidity levels of up to 100% relative humidity and can be installed at all temperatures ranging from 32 °F to 104 °F. No acclimatization is needed. ROCKFON ceiling tiles can be installed during the very early stage of the build (when windows are not

fully sealed) without any risk of deflection of the tiles. The low weight, stability and non-hygroscopic character of ROCKFON tiles will limit the weight of the fully installed ceiling whilst retaining its declared properties even when applied in infrequently heated and unheated rooms without condensation.

VOC/FORMALDEHYDE EMISSIONS:

The product fulfils requirements for low emitting acoustic ceiling tiles and meets the California Department of Health Services Standard Method V1.1 (February 2012) "Standard method for the Testing and Evaluation of Volatile Organic Chemical Emissions from Indoor Sources Using Environmental Chambers (Section 01350)." Selected potential applications: LEED, CHPS and CALGreen. All ROCKFON stone wool acoustic ceiling solutions are GREENGUARD Gold certified to GREENGUARD standards for low chemical emissions into indoor air during product usage.

HYGIENIC PROPERTIES:

ROCKFON ceiling tiles are made of water repellent stone wool. Stone wool has no nutritional value and therefore it provides no sustenance to harmful micro-organisms.

CLEANING PROPERTIES:

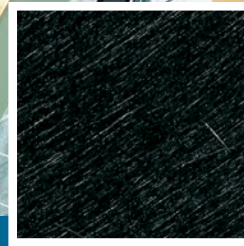
The surface can be vacuum-cleaned with a soft brush attachment.

WARRANTY INFORMATION:

30-Year Limited Product Warranty. See www.rockfon.com

SUSTAINABILITY:

ROCKFON stone wool ceiling tiles are primarily made from abundantly available basalt rock and contain up to 42% recycled materials. ROCKFON products supplied in North America are produced in ISO9001/ISO14001 certified factories.



ROCKFON® Industrial Opal/Nature/Black™

FEATURES & BENEFITS:




- For industrial applications
- Excellent sound absorption (NRC = 1.05)
- High fire performance
- To create a new ceiling or place under an existing one
- Available in white, natural and black finish
- Available in square lay-in

APPLICATIONS:

- Industry





Edge designation	Item number	Modular size	lbs/sqft	sqft/carton	NRC	CAC	AC	Fire Class	Light Reflectance	Thermal Insulation		
										R Value (BTU Units)	RSI Value (Watts Units)	
INDUSTRIAL OPAL												
Square Lay In 	SQ	6100	2' x 4' x 2"	0.80	32	1.05	22	-	A	0.64	7.0	1.23
INDUSTRIAL NATURE												
Square Lay In 	SQ	6200	2' x 4' x 2"	0.80	32	1.05	22	-	A	0.40	7.0	1.23
INDUSTRIAL BLACK												
Square Lay In 	SQ	6300	2' x 4' x 2"	0.80	32	1.05	22	-	A	0.04	7.0	1.23

MATERIAL:

Stone wool (Mineral Wool) ceiling tiles

SURFACE FINISH:

Factory painted glass scrim

FIRE PERFORMANCE:

Surface burning characteristics: UL723 (ASTM E84) Flame Spread Index 0-5, Smoke developed Index 0-5 (UL Labeled). CAN/ULC S102 Flame Spread Index 5-15, Smoke developed Index 0-5.

ASTM E1264 CLASSIFICATION:

Type XX - Stone wool base with membrane-faced overlay, Pattern G

SAG RESISTANCE:

ROCKFON ceiling tiles are dimensionally stable even at high humidity levels of up to 100% relative humidity and can be installed at all temperatures ranging from 32 °F to 104 °F. No acclimatization is needed. ROCKFON ceiling tiles can be installed during the very early stage of the build (when windows are not fully sealed)

without any risk of deflection of the tiles. The low weight, stability and non-hygroscopic character of ROCKFON tiles will limit the weight of the fully installed ceiling whilst retaining its declared properties even when applied in infrequently heated and unheated rooms without condensation.

VOC/FORMALDEHYDE EMISSIONS:

The product fulfils requirements for low emitting acoustic ceiling tiles and meets the California Department of Health Services Standard Method V1.1 (February 2012) "Standard method for the Testing and Evaluation of Volatile Organic Chemical Emissions from Indoor Sources Using Environmental Chambers (Section 01350)." Selected potential applications: LEED, CHPS and CALGreen. All ROCKFON stone wool acoustic ceiling solutions are GREENGUARD Gold certified to GREENGUARD standards for low chemical emissions into indoor air during product usage.

HYGIENIC PROPERTIES:

ROCKFON ceiling tiles are made of water repellent stone wool. Stone wool has no nutritional value and therefore it provides no sustenance to harmful micro-organisms.

CLEANING PROPERTIES:

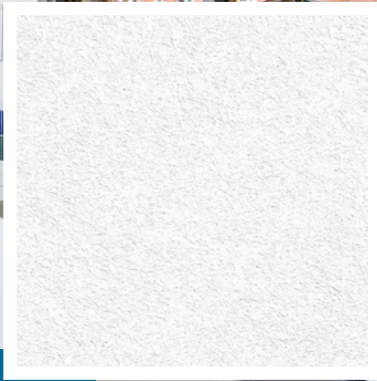
The surface can be vacuum-cleaned with a soft brush attachment.

WARRANTY INFORMATION:

30-Year Limited Product Warranty. See www.rockfon.com

SUSTAINABILITY:

ROCKFON stone wool ceiling tiles are primarily made from abundantly available basalt rock and contain up to 42% recycled materials. ROCKFON products supplied in North America are produced in ISO9001/ISO14001 certified factories.



ROCKFON® Contour™

FEATURES & BENEFITS:

- Innovative and aesthetically-pleasing frameless acoustical baffle
- High sound absorption contributes to acoustic comfort
- Fast and easy to install
- Ideally-suited for acoustical corrections

APPLICATIONS:

- Restaurants and cafes
- Museums
- Call centers
- Open-plan offices
- Industry





Edge designation	Item number	Modular size (nominal)	lbs/unit	units/carton	Fire Class	Light Reflectance
	7200	12" x 48" x 2"	5.07	12	A	0.79
	7225	24" x 48" x 2"	10.14	6	A	0.79

MATERIAL:

Stone wool (Mineral Wool) frameless baffle.

SURFACE FINISH:

Factory painted glass scrim on both sides.

ACOUSTICAL PERFORMANCE:

Tested in ISO Type J mounting:
3 x 15'9" rows, 2' 9" centers

12" x 48" x 2"	
Sabins per Baffle	
125 Hz:	3.5
250 Hz:	4.0
500 Hz:	7.1
1000 Hz:	8.5
2000 Hz:	8.4
4000 Hz:	7.8

FIRE PERFORMANCE:

Surface burning characteristics: UL723 (ASTM E84) Flame Spread Index 0, Smoke developed Index 5 (UL Labeled). CAN/ULC S102 Flame Spread Index 5, Smoke developed Index 0.

ASTM E1264 CLASSIFICATION:

Type XX - Stone wool base with membrane-faced overlay, Pattern G.

SAG RESISTANCE:

ROCKFON ceiling tiles are dimensionally stable even at high humidity levels of up to 100% relative humidity and can be installed at all temperatures ranging from 32 °F to 104 °F. No acclimatization is needed. ROCKFON ceiling tiles can be installed during the very early stage of the build (when windows are not fully sealed) without any risk of deflection of the tiles. The low weight, stability and non-hygroscopic character of ROCKFON tiles will limit the weight of the fully installed ceiling whilst retaining its declared properties even when applied in infrequently heated and unheated rooms without condensation.

VOC/FORMALDEHYDE EMISSIONS:

The product fulfils requirements for low emitting acoustic ceiling tiles and meets the California Department of Health Services Standard Method V1.1 (February 2012) "Standard method for the Testing and Evaluation of Volatile Organic Chemical Emissions from Indoor Sources Using Environmental Chambers (Section 01350)." Selected potential applications: LEED, CHPS and CALGreen. All ROCKFON stone wool acoustic ceiling solutions are GREENGUARD Gold certified to GREENGUARD standards for low chemical emissions into indoor air during product usage.

HYGIENIC PROPERTIES:

ROCKFON ceiling tiles are made of water repellent stone wool. Stone wool has no nutritional value and therefore it provides no sustenance to harmful micro-organisms.

CLEANING PROPERTIES:

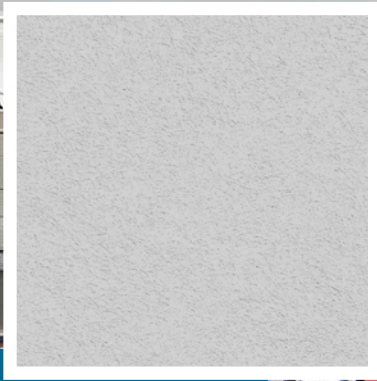
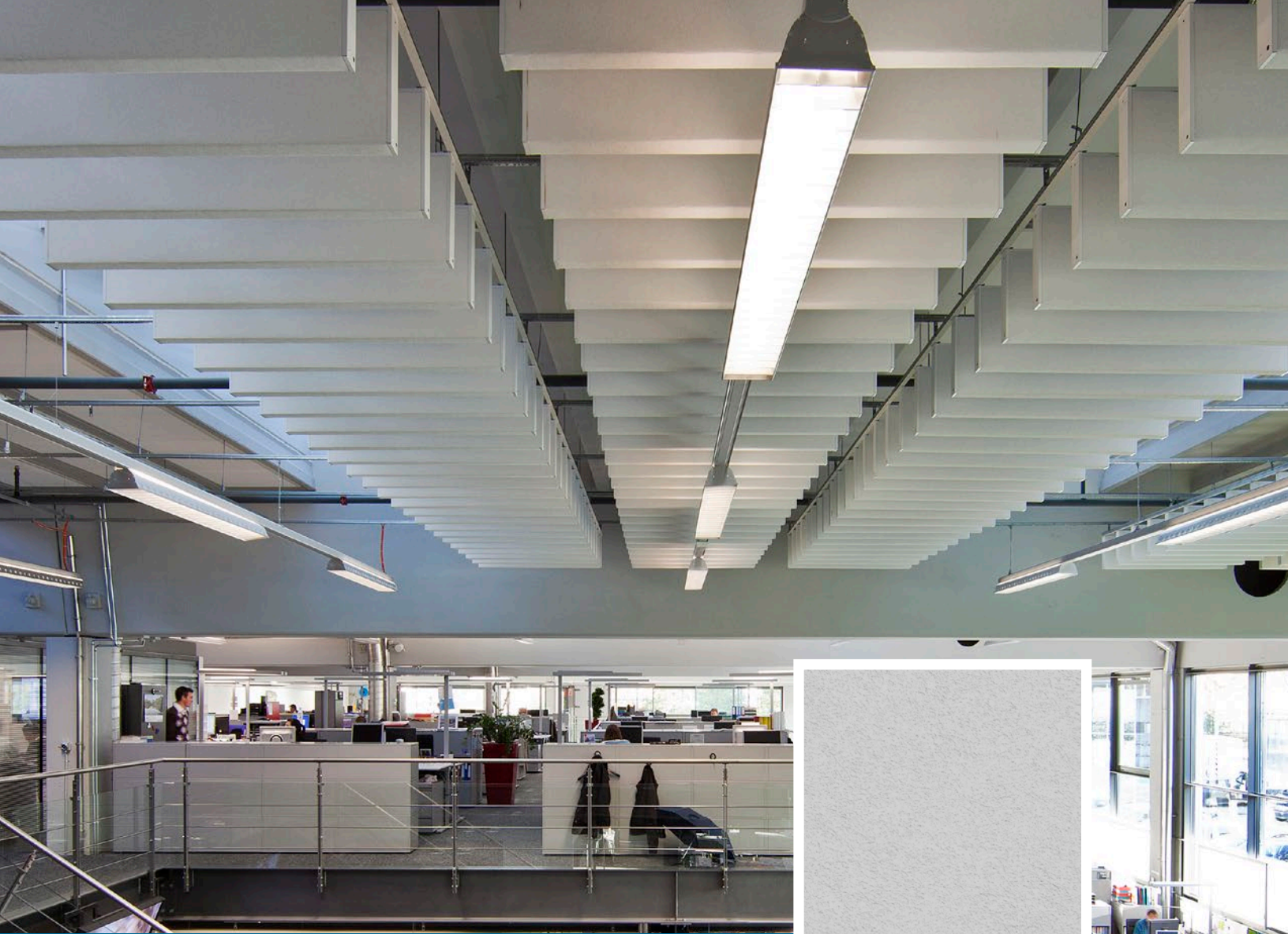
The surface can be vacuum-cleaned with a soft brush attachment.

WARRANTY INFORMATION:

30-Year Limited Product Warranty. See www.rockfon.com

SUSTAINABILITY:

ROCKFON stone wool ceiling tiles are primarily made from abundantly available basalt rock and contain up to 42% recycled materials. ROCKFON products supplied in North America are produced in ISO9001/ISO14001 certified factories.



ROCKFON® Multiflex™ Baffles

FEATURES & BENEFITS:

- Vertically-installed baffles
- Three-sided white frame or two-sided galvanized frame
- High sound absorption contributes to acoustic comfort
- Fast and easy to install
- Ideally-suited for acoustical corrections

APPLICATIONS:

- Restaurants and cafes
- Museums
- Call centers
- Open-plan offices
- Industry





Edge designation	Item number	Modular size (nominal)	lbs/unit	units/carton	Fire Class	Light Reflectance
FIBRAL MULTIFLEX 	Three-sided white frame	12" x 48" x 2"	4.85	12	A	0.77
	3101	12" x 48" x 2"	4.85	12	A	0.77
	3126	18" x 48" x 2"	6.39	6	A	0.77
	3151	24" x 48" x 2"	8.16	6	A	0.77
OPAL MULTIFLEX 	Two-sided galvanized frame	12" x 48" x 2"	3.75	12	A	0.64
	3201	12" x 48" x 2"	3.75	12	A	0.64
	3226	18" x 48" x 2"	5.51	6	A	0.64
	3251	24" x 48" x 2"	7.28	6	A	0.64

MATERIAL:

Stone wool (Mineral Wool) framed baffles.

SURFACE FINISH:

Factory painted glass scrim on both sides.

ACOUSTICAL PERFORMANCE:

Tested in ISO Type J mounting:

3 x 15'9" rows, 2'9" centers

12" x 48" x 2"	
Sabins per Baffle	
125 Hz:	1.9
250 Hz:	3.9
500 Hz:	4.5
1000 Hz:	6.0
2000 Hz:	6.1
4000 Hz:	6.0

18" x 48" x 2"	
Sabins per Baffle	
125 Hz:	3.5
250 Hz:	4.9
500 Hz:	6.6
1000 Hz:	8.1
2000 Hz:	8.2
4000 Hz:	8.3

24" x 48" x 2"	
Sabins per Baffle	
125 Hz:	3.7
250 Hz:	4.7
500 Hz:	7.7
1000 Hz:	9.0
2000 Hz:	9.5
4000 Hz:	9.3

FIRE PERFORMANCE:

Surface burning characteristics: UL723 (ASTM E84) Flame Spread Index 0, Smoke developed Index 5 (UL Labeled). CAN/ULC S102 Flame Spread Index 5, Smoke developed Index 0.

ASTM E1264 CLASSIFICATION:

Type XX - Stone wool base with membrane-faced overlay, Pattern G.

SAG RESISTANCE:

ROCKFON ceiling tiles are dimensionally stable even at high humidity levels of up to 100% relative humidity and can be installed at all temperatures ranging from 32 °F to 104 °F. No acclimatization is needed. ROCKFON ceiling tiles can be installed during the very early stage of the build (when windows are not fully sealed) without any risk of deflection of the tiles. The low weight, stability and non-hygroscopic character of ROCKFON tiles will limit the weight of the fully installed ceiling whilst retaining its declared properties even when applied in infrequently heated and unheated rooms without condensation.

VOC/FORMALDEHYDE EMISSIONS:

The product fulfils requirements for low emitting acoustic ceiling tiles and meets the California Department of Health Services Standard Method V1.1 (February 2012) "Standard method for the Testing and Evaluation of Volatile Organic Chemical Emissions from Indoor Sources Using Environmental Chambers (Section 01350)." Selected potential applications: LEED, CHPS and CALGreen. All ROCKFON stone wool acoustic ceiling solutions are GREENGUARD Gold certified to GREENGUARD standards for low chemical emissions into indoor air during product usage.

HYGIENIC PROPERTIES:

ROCKFON ceiling tiles are made of water repellent stone wool. Stone wool has no nutritional value and therefore it provides no sustenance to harmful micro-organisms.

CLEANING PROPERTIES:

The surface can be vacuum-cleaned with a soft brush attachment.

WARRANTY INFORMATION:

30-Year Limited Product Warranty. See www.rockfon.com

SUSTAINABILITY:

ROCKFON stone wool ceiling tiles are primarily made from abundantly available basalt rock and contain up to 42% recycled materials. ROCKFON products supplied in North America are produced in ISO9001/ISO14001 certified factories.



ROCKFON® Island™

FEATURES & BENEFITS:

- Innovative and aesthetically-pleasing frameless acoustical island
- Available in square and rectangular format
- High sound absorption contributes to acoustic comfort
- Fast and easy to install
- Ideally-suited for acoustical corrections

APPLICATIONS:

- Restaurants and cafes
- Waiting rooms
- Call centers
- Open-plan offices





Edge designation	Item number	Modular size (nominal)	lbs/unit	units/carton	Fire Class	Light Reflectance
	DMT 8100	4' x 4' x 1 1/2"	19.84	4	A	0.86
	DMT 8125	4' x 6' x 1 1/2"	28.66	4	A	0.86
	DMT 8150	4' x 8' x 1 1/2"	38.02	2	A	0.86

MATERIAL:

Stone wool (Mineral Wool) island.

SURFACE FINISH:

Visible side: Factory painted glass scrim
Rear side: White acoustic fleece providing excellent light and heat reflection.

ACOUSTICAL PERFORMANCE:

5 units at distance > 6' 6-3/4" centers
Suspension height: 19-1/2"

4' x 4' x 1 1/2"	
Sabins per Island	
125 Hz:	5.7
250 Hz:	11.5
500 Hz:	21.2
1000 Hz:	26.9
2000 Hz:	28.7
4000 Hz:	29.1

4 units at distance > 6' 6-3/4" centers
Suspension height: 19-1/2"

4' x 6' x 1 1/2"	
Sabins per Island	
125 Hz:	7.9
250 Hz:	19.0
500 Hz:	30.5
1000 Hz:	39.5
2000 Hz:	42.0
4000 Hz:	41.3

5 units spaced apart 11-3/4"
Suspension height: 19-1/2"

4' x 8' x 1 1/2"	
Sabins per Island	
125 Hz:	5.2
250 Hz:	12.1
500 Hz:	19.2
1000 Hz:	25.0
2000 Hz:	26.7
4000 Hz:	26.7

FIRE PERFORMANCE:

Surface burning characteristics: UL723 (ASTM E84) Flame Spread Index 0, Smoke developed Index 5 (UL Labeled). CAN/ULC S102 Flame Spread Index 5, Smoke developed Index 0.

ASTM E1264 CLASSIFICATION:

Type XX - Stone wool base with membrane-faced overlay, Pattern G.

SAG RESISTANCE:

ROCKFON ceiling tiles are dimensionally stable even at high humidity levels of up to 100% relative humidity and can be installed at all temperatures ranging from 32 °F to 104 °F. No acclimatization is needed. ROCKFON ceiling tiles can be installed during the very early stage of the build (when windows are not fully sealed) without any risk of deflection of the tiles. The low weight, stability and non-hygroscopic character of ROCKFON tiles will limit the weight of the fully installed ceiling whilst retaining its declared properties even when applied in infrequently heated and unheated rooms without condensation.

VOC/FORMALDEHYDE EMISSIONS:

The product fulfils requirements for low emitting acoustic ceiling tiles and meets the California Department of Health Services Standard Method V1.1 (February 2012) "Standard method for the Testing and Evaluation of Volatile Organic Chemical Emissions from Indoor Sources Using Environmental Chambers (Section 01350)." Selected potential applications: LEED, CHPS and CALGreen. All ROCKFON stone wool acoustic ceiling solutions are GREENGUARD Gold certified to GREENGUARD standards

for low chemical emissions into indoor air during product usage.

HYGIENIC PROPERTIES:

ROCKFON ceiling tiles are made of water repellent stone wool. Stone wool has no nutritional value and therefore it provides no sustenance to harmful micro-organisms.

CLEANING PROPERTIES:

The surface can be vacuum-cleaned with a soft brush attachment.

WARRANTY INFORMATION:

30-Year Limited Product Warranty. See www.rockfon.com

SUSTAINABILITY:

ROCKFON stone wool ceiling tiles are primarily made from abundantly available basalt rock and contain up to 42% recycled materials. ROCKFON products supplied in North America are produced in ISO9001/ISO14001 certified factories.

SELECTION TABLE

Product	Page	Edges	Modular size	NRC	CAC	AC	Fire Class
DESIGN WHITE							
ROCKFON® Sonar®	52	SQ, SLN, SLT, DMT, SLP, SCD, CDX	2' x 2', 2' x 4', 2' x 5', 2' x 6', 2' x 8', 4' x 4', 30" x 30"; 20" x 60"	0.70 - 0.95	22-25	190	Class A
ROCKFON® Sonar Activity™	54	SQ, SLT, DMT	2' x 2'	0.90	22	180	Class A
ROCKFON® Sonar™ dB	56	SQ, SLN, SLT, SLP	2' x 2'	0.85	33-43	170-190	Class A
ROCKFON Alaska®	58	SQ, SLN, SLT, DMT, SCD, CDX	2' x 2', 2' x 4'	0.70 - 0.90	22	180	Class A
ROCKFON® Alaska™ dB	60	SQ, SLN, SLT	2' x 2', 2' x 4'	0.85	35	180	Class A
DESIGN DECORATION							
ROCKFON® Color-all™	62	SQ, SL, SLN, CDX	2' x 2', 2' x 4'	0.85-0.95	22	-	Class A
ROCKFON® Cinema Black™	64	SQ	2' x 2', 2' x 4'	0.85-0.95	-	-	Class A
BASIC WHITE							
ROCKFON® Pacific™	68	SQ, SL, SLN	2' x 2', 2' x 4'	0.60	-	-	Class A
ROCKFON Artic®	70	SQ, SL, SLN	2' x 2', 2' x 4', 2' x 5', 20" x 60"	0.75	23	-	Class A
ROCKFON Koral®	72	SQ, SL, SLN	2' x 2', 2' x 4'	0.85	22	170	Class A
ROCKFON® Tropic™	74	SQ, SL, SLN	2' x 2', 2' x 4', 20" x 60"	0.85-0.90	22	-(5/8") 180 (3/4")	Class A
SPECIAL AREA							
<i>Healthcare</i>							
ROCKFON® Medical Standard™	76	SQ, SL, SLN	2' x 2', 2' x 4'	0.90	22	170	Class A
ROCKFON® Medical Plus™	78	SQ, SL, SLN, CDX	2' x 2', 2' x 4'	0.90	22	-	Class A
ROCKFON® Medical Air™	80	SQ	2' x 2', 2' x 4'	0.85	22	-	Class A
<i>Hygiene</i>							
ROCKFON® Hygienic Plus™	82	SQ	2' x 2', 2' x 4'	0.90	22	-	Class A
<i>Impact Resistance</i>							
ROCKFON® Impact™	84	SQ	2' x 2'	0.85	22	-	Class A
<i>Industrial</i>							
ROCKFON® Facett™	86	SQ	2' x 4'	1.00	22	-	Class A
ROCKFON® Industrial Opal™	88	SQ	2' x 4'	1.05	22	-	Class A
ROCKFON® Industrial Nature™	88	SQ	2' x 4'	1.05	22	-	Class A
ROCKFON® Industrial Black™	88	SQ	2' x 4'	1.05	22	-	Class A
NON-SUSPENDED CEILING							
<i>Baffles</i>							
ROCKFON® Contour™	90	DMT	12" x 48" x 2"; 24" x 48" x 2"	N/A	N/A	N/A	Class A
ROCKFON® Multiflex™ Fibril Baffles	92	Three-sided white frame	12" x 48" x 2"; 18" x 48" x 2"; 24" x 48" x 2"	N/A	N/A	N/A	Class A
ROCKFON® Multiflex™ Opal Baffles	92	Two-sided galvanized frame	12" x 48" x 2"; 18" x 48" x 2"; 24" x 48" x 2"	N/A	N/A	N/A	Class A
<i>Islands</i>							
ROCKFON® Island™	94	DMT	4' x 4' x 1 1/2"; 4' x 6' x 1 1/2"; 4' x 8' x 1 1/2"	N/A	N/A	N/A	Class A

N/A: Not applicable

Fire performance UL 723 (ASTM E 84) Flame spread / Smoke developed	Fire performance CAN ULC S102 Flame spread / Smoke developed	Light Reflectance	Recycled content	ASTM E1264 Classification	Thermal Insulation R Value (BTU units)	RSI Value (Watts Units)
0/0	10/5	0.85	up to 38%	Type XX, Pattern E	2.6-3.5	0.46-0.62
0/0	10/5	0.85	up to 40%	Type XX, Pattern E	5.3	0.92
0-5/0-5	10-15/5	0.85	up to 40%	Type XX, Pattern E	3.5-7.0	0.62-1.23
0/5	5/0	0.86	up to 39%	Type XX, Pattern G	2.6-3.1	0.46-0.54
0-5/0-5	10-15/5	0.86	up to 39%	Type XX, Pattern G	0.35	0.62
5/0	15/5	color dependant	up to 40%	Type XX, Pattern G	2.2-3.1	0.39-0.54
5/0	15/5	0.04	up to 43%	Type XX, Pattern G	2.2-3.5	0.39-0.62
0/5	5/0	0.85	up to 37%	Type XX, Pattern G	1.8	0.31
0/5	5/0	0.85	up to 37%	Type XX, Pattern G	2.2 - 2.6	0.39 - 0.46
0/5	5/0	0.86	up to 34%	Type XX, Pattern E	2.2	0.39
0/5	5/0	0.86	up to 36%	Type XX, Pattern G	2.2-2.6	0.39-0.46
0/0	10/5	0.86	up to 34%	Type XX, Pattern E	2.2	0.39
0/5	5/0	0.83	up to 38%	Type XX, Pattern E	2.6-3.1	0.46-0.54
5/5	15/5	0.83	up to 35%	Type XX, Pattern E	3.5	0.62
0/5	5/0	0.83	up to 38%	Type XX, Pattern E	2.6	0.46
0/5	5/0	0.86	up to 39%	Type XX, Pattern E	2.6-5.3	0.46-0.92
0/5	5/0	0.68	up to 42%	Type XX, Pattern E	5.3-14.0	0.92-2.47
0/5	5/0	0.64	up to 42%	Type XX, Pattern G	7.0	1.23
0/5	5/0	0.40	up to 42%	Type XX, Pattern G	7.0	1.23
5/0	15/5	0.04	up to 42%	Type XX, Pattern G	7.0	1.23
0/5	5/0	0.79	up to 39%	Type XX, Pattern G	N/A	N/A
0/5	5/0	0.77	up to 40%	Type XX, Pattern G	N/A	N/A
0/5	5/0	0.64	up to 41%	Type XX, Pattern G	N/A	N/A
0/5	5/0	0.86	up to 39%	Type XX, Pattern G	N/A	N/A

We believe our acoustic stone wool and metal solutions for ceilings and walls are a fast and simple way to create beautiful, comfortable and safe spaces.

Easy to install and durable, they protect people from noise and the spread of fire. They are our way of making a constructive contribution towards a sustainable future.

Create and Protect is what drives us. It means putting people first, sharing success and maintaining trust.

It's our rock-solid promise to you. At ROCKFON, Create and Protect is what we do - and it's inspired by you.

June 2016

ROCKFON

4849 S. Austin Ave.
Chicago, IL 60638
USA

Tel. 1-800-323-7164
Fax. 1-800-222-3744
Email. cs@rockfon.com